

Milling Vise

Milling Accessories



G101-G188

INDEX

G101~113

Milling Vise



65000 G101



65006 G102



65008-01 G102



65008-02 G102



65010-80 G103



65010-100 G103



65010-125 G104



65010-300 G104



65040 G105



65045 G106



65060 G108



65061 G108



65062 G108



65070 G109



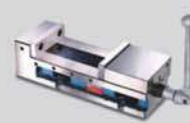
65080 G110



65090 G111



65095 G112



65100 G113



65085 G126

G114~126

Milling Vise



65110 G114



65120 G115



65130 G115



65140 G116



65150 G117



65160 G119



65170 G119



65180 G120



65190 G120



65200 G121



65210 G121



65220 G122



65230 G123



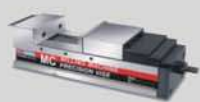
65240 G124



65250 G125



65260 G126

G127~142
Milling Vise


65270 G127



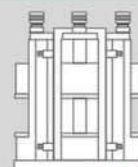
65280 G128



65290 G129



65300 G130



65310 G130



65320 G131



65330 G132



65340 G133



65350 G134



65360 G135



65370 G136



65380 G137



65390 G138



65400 G139



65420 G141

G143~154
Dividing Head & Plate


65500 G143



65510 G144



65520 G145



65530 G145



65540 G146



65550 G146



65560 G147



65570 G147



65580 G148



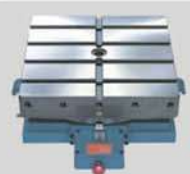
65590 G149



65600 G151



65600-01 G151



65610 G152



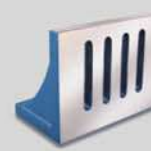
65620 G153



65630 G153



65640 G154



65650 G154

INDEX

G155~164

Milling Clamp Fixture



65700 G155



65710 G155



65720 G156



65730 G156



65740 G156



65750 G157



65760 G157



65770 G157



65780 G158



65790 G158



65800 G158



65810 G159



65830 G160



65840 G160



65845 G161



65850 G162



65852 G162



65854 G163



65856 G163



65858 G164



65860 G164

G165~173

Milling Clamp Fixture



65862 G165



65864 G165



65866 G166



65868 G166



65870 G166



65880 G167



65882 G168



65884 G168



65886 G169



65888 G169



65890 G170



65892 G171



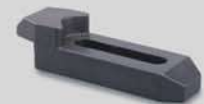
65894 G171



65896 G172



65898 G172



65900 G173



65902 G173

G173~181
Milling Clamp Fixture


65904 G173



65906 G174



65908 G174



65910 G174



65912 G175



65914 G175



65916 G175



65918 G176



65920 G176



65922 G176



65924 G177



65926 G177



65928 G177



65930 G178



65932 G178



65934 G179



65936 G179



65938 G180



65940 G180



65942 G181



65944 G181

G182~188
Milling Clamp Fixture


65946 G182



65948 G182



65950 G182



65952~56 G183



65958~62 G184



65964 G185



65966 G185



65968 G185



65970 G186



65972 G186



65974 G186



65976 G187



65978 G187



65980 G187



65982 G188



65984 G188



65986 G188

Milling Machine Accessories

65086

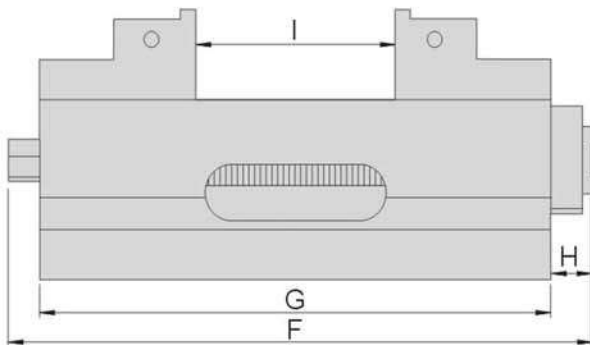
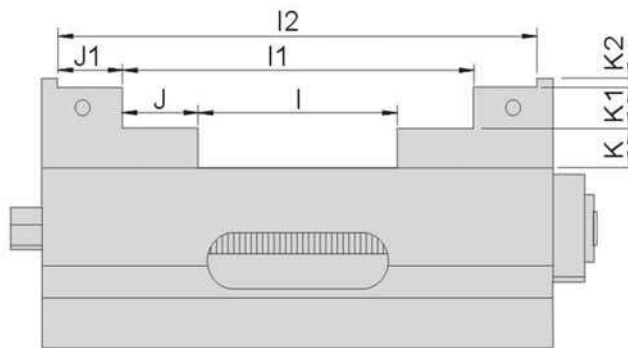
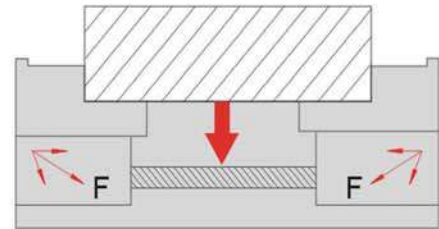
scv

Self Centering Vise

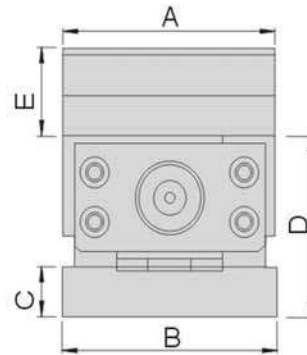
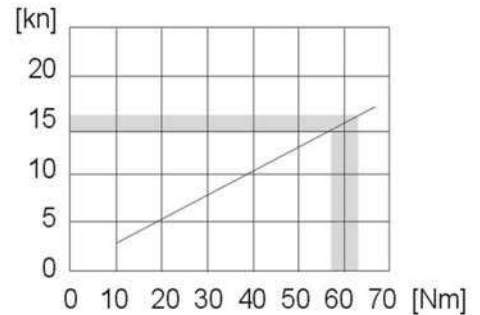


Features:

- ▶ Suitable for 4th, 5th axis, CNC rotary table and horizontal/vertical CNC milling machine.
- ▶ Repeating center accuracy is $\pm 0.01\text{mm}$.
- ▶ Body is made of FCD60 and the rail is with high frequency heat treatment above HRC45° which achieve high wear resistance.
- ▶ Jaw face adopting full steel with heat treatment reach over HRC 55°, interchangeability is flexible.
- ▶ Lock tight system to prevent floating for better efficiency.



CLAMPING CURVE



Unit:mm

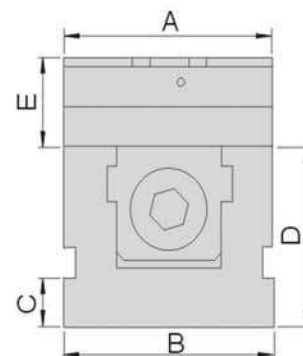
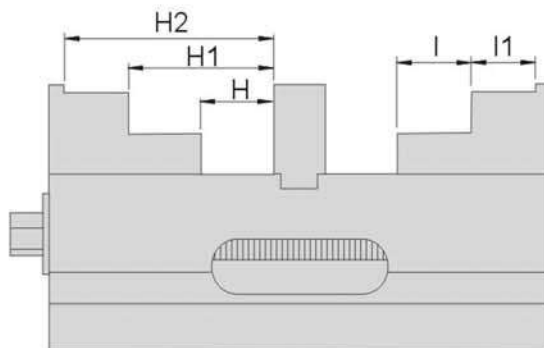
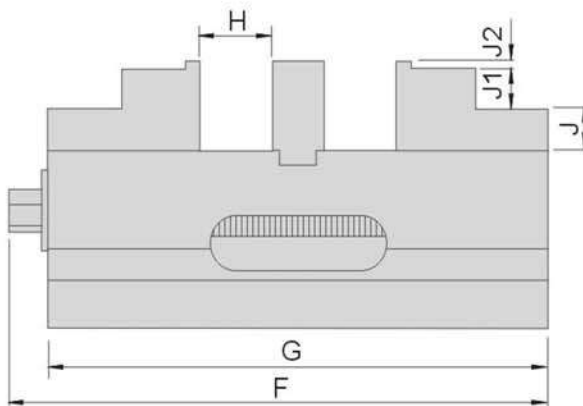
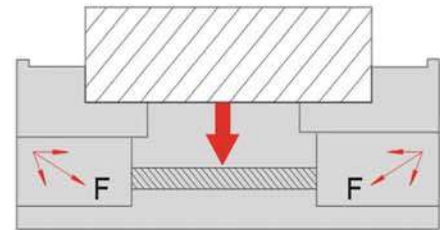
Order No.	Model	A	B	C	D	E	F	G	H	I	I1	I2	J	J1	K	K1	K2	N.W.
65086-01	SCV60	59	60	18	60	25	143	120	13	0~50	38~85	--	17.5	--	12.5	12.5	--	4.5kg
65086-02	SCV100	100	101	22	80	40	260	240	20	0~90	70~160	134~222	35	31	18	18	4	17.5kg
65086-03	SCV160	160	161	22	105	55	440	370	70	0~200	86~285	--	42.5	--	27.5	27.5	--	47.5kg

65087 SDV100 Double-Lock Mechanical Vice



Features:

- ▶ Capable of clamping two different sizes workpieces at the same time.
- ▶ Fixed block in the middle can be dismantled for clamping larger workpiece.
- ▶ Suitable on small CNC machining center.
- ▶ Special angle lock design and effectively reduce the workpiece floating.
- ▶ Optional soft jaws are available on request.



铣床附件
 MILLING MACHINE ACCESSORIES

Unit:mm

Order No.	Model	A	B	C	D	E	F	G	H	H1	H2	I	I1	J	J1	J2	N.W.
65087	SDV100	100	101	22	80	40	260	240	0~35	35~70	66~100	35	31	18	18	4	18.5kg

Milling Machine Accessories

65000

LK

LK Tool Machine Vise

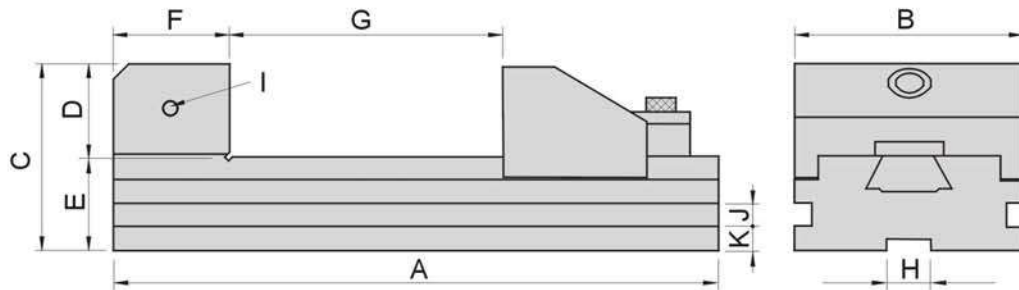
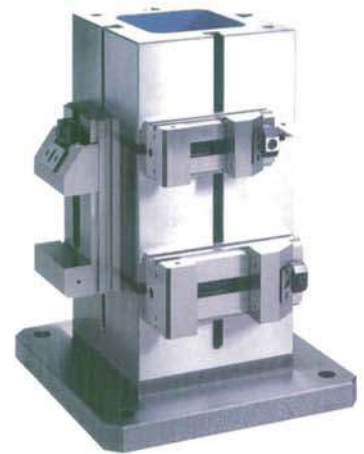
PAT: 170861
ZL 99 2 48851.6



Features:

- ▶ Adopting new structure and high rigidity design.
- ▶ Powerful clamping force.
- ▶ Suitable for CNC machines.
- ▶ Material: Tool Steel
- ▶ Hardness: HRC55°-60°
- ▶ Parallelism: 0.003mm/100mm
- ▶ Squareness: 0.004mm/100mm

Applications:



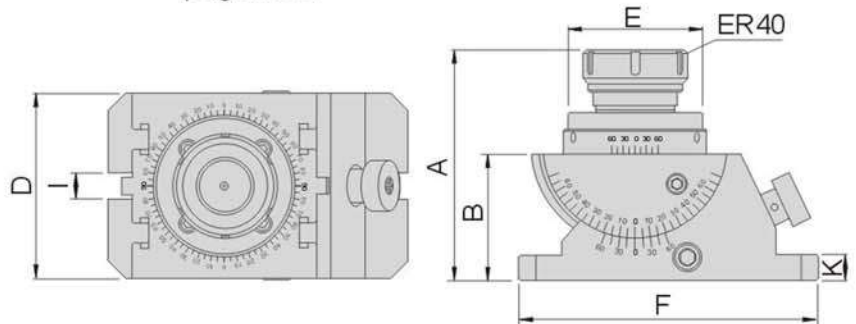
Unit:mm

Order No.	Model	A	B	C	D	E	F	G	H	I	J	K	N.W.
65000-60	LK60	180	60	55	27	28	35	0-80	14	M6	6	7.5	3.0kg
65000-80	LK80	205	80	64	32	32	40	0-100	14	M6	8	8	4.9kg
65000-100	LK100	250	96	82	40	42	45	0-125	14	M6	10	12	9.7kg
65000-125	LK125	310	125	88	43	45	50	0-150	16	M6	12	12	16.5kg

65006
CHM-ER40
Precision Universal ER Chuck

Features:

- ▶ This fixture is composed of two parts: a precision ER collet chuck and a swivel angle plate base, ER collet chuck is capable of revolving 360°.
- ▶ Suitable for applying on milling, grinding and engraving...etc
- ▶ For more info on ER40 collet chuck, please refer to page F85.



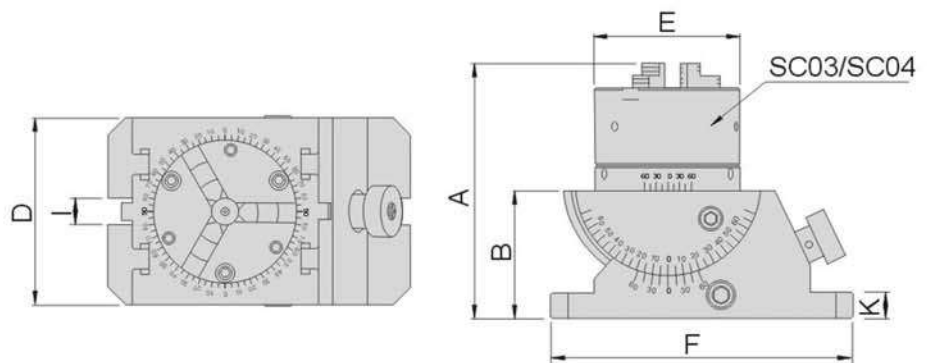
Unit:mm

Order No.	Model	A	B	D	E	F	I	K	N.W.
65006	CHM-ER40	138	75	110	∅80	178	16	15	11kg

65008
CHM-SC
Precision Universal 3-Jaws Chuck
CHM-SC03

Features:

- ▶ This fixture is composed of two parts: a 3-Jaw chuck and a swivel angle plate base, 3-Jaw chuck is capable of revolving 360°.
- ▶ Suitable for applying on milling, grinding and engraving...etc
- ▶ For more info on 3-Jaw Chuck, please refer to page H01.

CHM-SC04


Unit:mm

Order No.	Model	A	B	D	E	F	I	K	N.W.
65008-01	CHM-SC03	151	75	110	∅85	178	16	15	12kg
65008-02	CHM-SC04	182	75	110	∅112	178	16	15	13kg

Milling Machine Accessories

65010-80

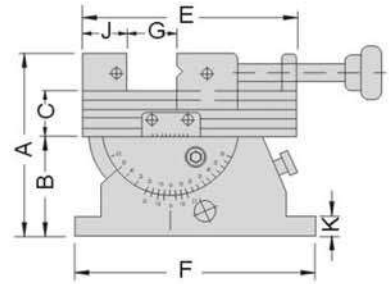
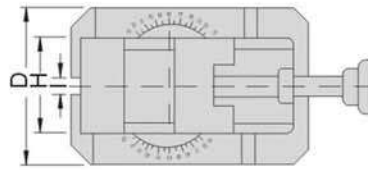
CHM80

Precision Universal Vise



Features:

- ▶ This fixture is composed of two parts: a precision vise and a swivel angle plate base, the vise is capable of revolving 360°.
- ▶ Tilting angle 45° vertically.
- ▶ Suitable for inclined surface, angular drilling
- ▶ machining on various machine applications.



Unit:mm

Order No.	Model	A	B	C	D	E	F	G	H	I	J	K	N.W.
65010-80	CHM80	138	75	32	110	160	178	0~80	70	16	33	15	14kg

65010-100

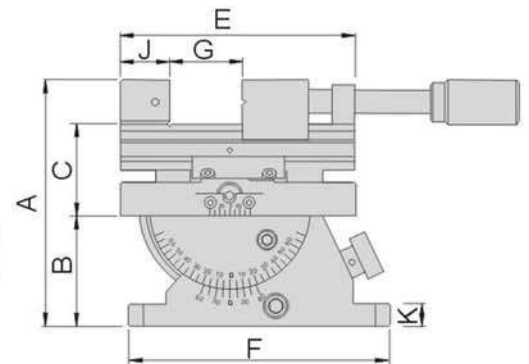
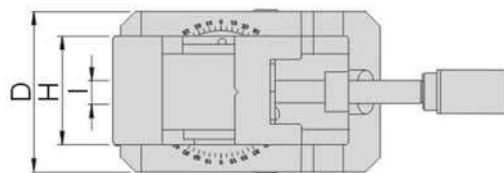
CHML50

Precision 3D Universal Vise



Features:

- ▶ This fixture is composed of two parts: a precision sine vise and a swivel angle plate base, the vise is capable of revolving 360°.
- ▶ Tilting angle 45° vertically.
- ▶ Suitable for inclined surface, angular drilling machining on various machine applications.
- ▶ With compound sine vise, it can be used for 3D machining.



Unit:mm

Order No.	Model	A	B	C	D	E	F	G	H	I	J	K	N.W.
65010-100	CHML50	169	75	63	110	160	178	0~80	73	16	33	15	16kg

65010-125 CHM125 Precision Universal Vise

CHM125

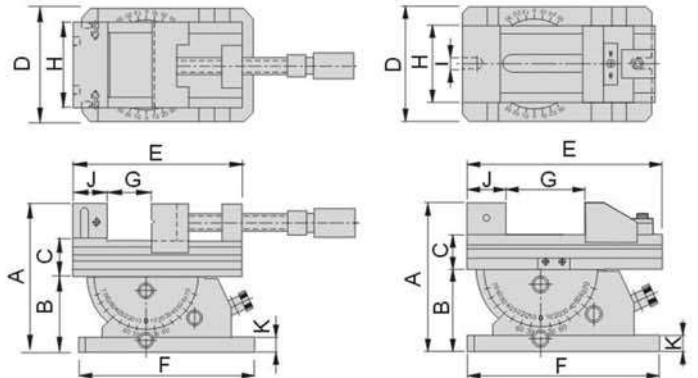


CHM-PGV125



Features:

- ▶ This fixture is composed of two parts: a precision vise and a swivel angle plate base, the vise is capable of revolving 360°.
- ▶ Tilting angle 45° vertically.
- ▶ Suitable for inclined surface, angular drilling
- ▶ machining on various machine applications.



Unit:mm

Order No.	Model	A	B	C	D	E	F	G	H	I	J	K	N.W.
65010-125	CHM125	216	128	45	180	310	300	0~150	125	18	50	25	53kg
65010-125A	CHM-PGV125	218	128	50	180	300	300	0~165	125	18	60	25	57kg

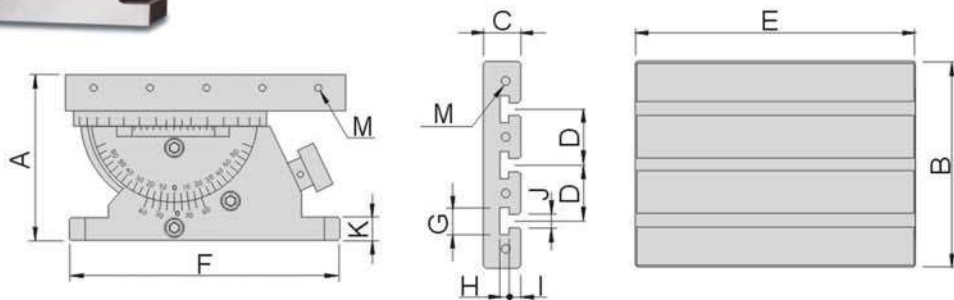
MILLING MACHINE ACCESSORIES

65010-300 CHM-HT300 Precision Universal Tilting Table



Features:

- ▶ This fixture is composed of two parts: a table with T-slot and a swivel angle plate base, the table is capable of revolving 360°.
- ▶ Table with T-slot assembly with swivel base for rotation and angle adjustment.
- ▶ Suitable for inclined surface, angular drilling machining on various machine applications.



Unit:mm

Order No.	Model	A	B	C	D	E	F	G	H	I	J	K	M	Clamp	N.W.
65010-300	CHM-HT300	183	220	40	60	300	300	28	10	12	14	25	M8	M16	47kg

Milling Machine Accessories

65040

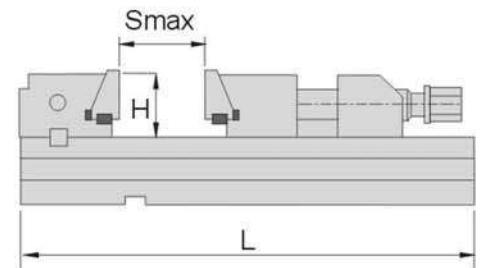
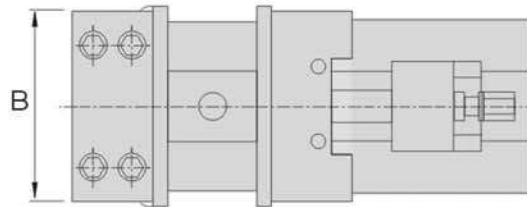
GL

Precision Modular Vice



Features :

- ▶ Modular design with quick change in components.
- ▶ Widely used in machining centers.
- ▶ Material : Alloy Steel, HRC58°-62°
- ▶ Parallelism: within 0.005/100mm
- ▶ Squareness: within 0.005/100mm
- ▶ Swivel base is optional.



Unit:mm

Order No.	Model	B	H	S max	L	Clamping force (Kg)
65040-01	GL100-I	100	30	100	270	3000
65040-02	GL125-I	125	40	150	345	3000
65040-03	GL150A-I	150	50	200	420	5000
65040-04	GL150B-I	150	50	300	520	5000
65040-05	GL150C-I	150	50	400	620	5000
65040-06	GL175A-I	175	60	200	455	6000
65040-07	GL175B-I	175	60	300	555	6000
65040-08	GL175C-I	175	60	400	655	6000
65040-09	GL175D-I	175	60	500	755	6000
65040-10	GL175E-I	175	60	600	855	6000
65040-11	GL200A-I	200	65	200	495	10000
65040-12	GL200B-I	200	65	300	595	10000
65040-13	GL200C-I	200	65	400	695	10000
65040-14	GL200D-I	200	65	500	795	10000
65040-15	GL200E-I	200	65	600	895	10000
65040-16	GL300A-I	300	80	200	535	12000
65040-17	GL300B-I	300	80	300	635	12000
65040-18	GL300C-I	300	80	400	735	12000
65040-19	GL300D-I	300	80	500	835	12000
65040-20	GL300E-I	300	80	600	935	12000
65040-21	GL300F-I	300	80	700	1035	12000
65040-22	GL300G-I	300	80	800	1135	12000

65060/1/2 GQ Separate Precision Modular Vises

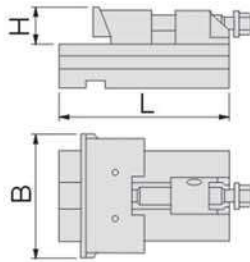


Features :

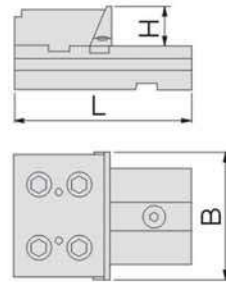
- ▶ Widely used in machining centers, CNC milling machine, grinding machines.
- ▶ Suitable for clamping large workpiece or adjusts the position of clamping, according to the sizes of the workpiece.
- ▶ Material : High Quality Alloy Steel, HRC58°-62°
- ▶ Parallelism: within 0.005/100mm
- ▶ Squareness: within 0.005/100mm



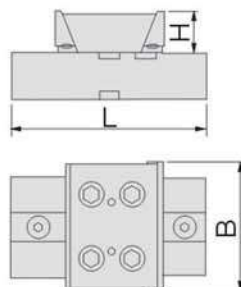
GQ-I
MOVABLE JAW SECTION



GQ-II
FIXED JAW SECTION



GQ-III
DOUBLE FIXED JAW SECTION



MILLING MACHINE ACCESSORIES

Unit:mm

Order No.	Model	L	B	H
65060-01	GQ84100-I	140	100	30
65060-02	GQ84125-I	160	125	40
65060-03	GQ84150-I	230	150	50
65060-04	GQ84175-I	240	175	60
65060-05	GQ84200-I	300	200	65

Unit:mm

Order No.	Model	L	B	H
65061-01	GQ84100-II	140	100	30
65061-02	GQ84125-II	160	125	40
65061-03	GQ84150-II	230	150	50
65061-04	GQ84175-II	240	175	60
65061-05	GQ84200-II	300	200	65

Unit:mm

Order No.	Model	L	B	H
65062-01	GQ84100-III	140	100	30
65062-02	GQ84125-III	160	125	40
65062-03	GQ84150-III	230	150	50
65062-04	GQ84175-III	240	175	60
65062-05	GQ84200-III	300	200	65

Milling Machine Accessories

65080

SCV90

Self Centering Vise



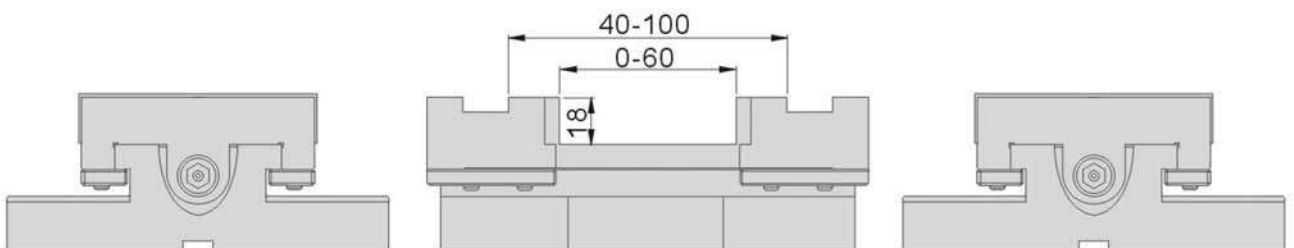
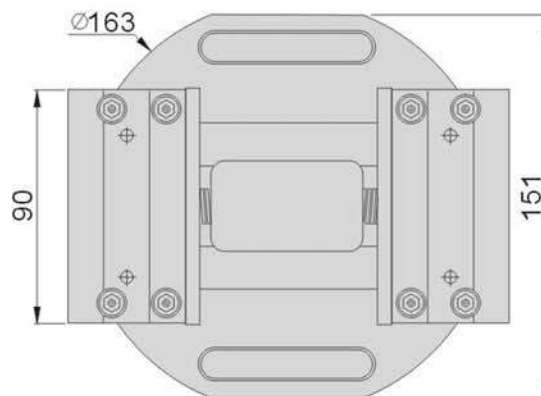
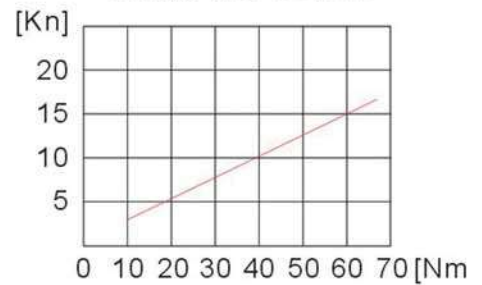
N.W.8kg

Features:

- ▶ Suitable for 4th, 5th axis, CNC rotary table and horizontal/vertical CNC milling machine.
- ▶ Repeating center accuracy is $\pm 0.01\text{mm}$.
- ▶ Body is made of alloy steel and the rail is with high frequency heat treatment above HRC45° which achieve high wear resistance.
- ▶ Jaw face adopting full steel with heat treatment reach over HRC 55°, interchangeability is flexible.
- ▶ Lock tight system to prevent floating for better efficiency.



CLAMPING CURVE

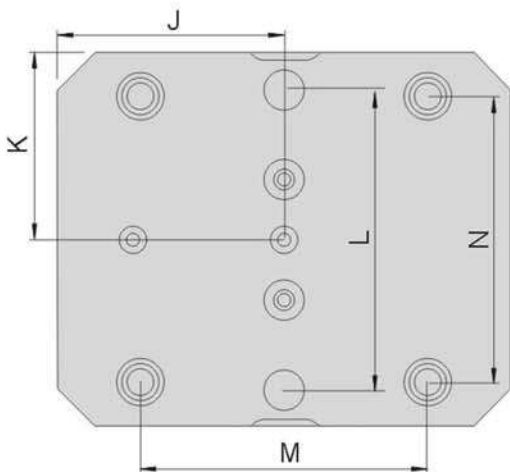
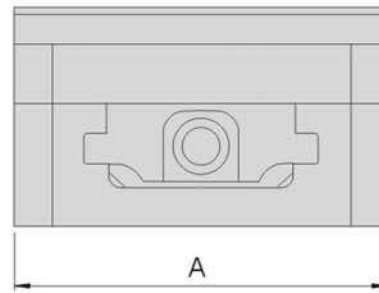
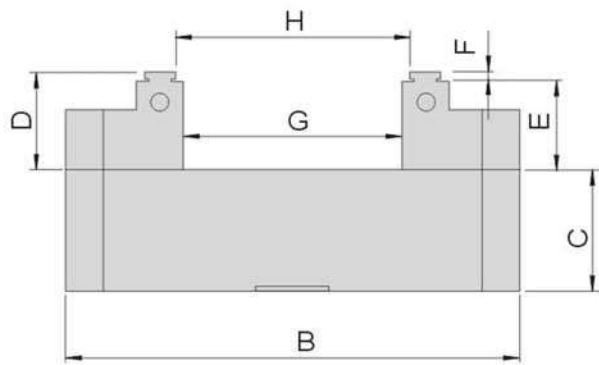
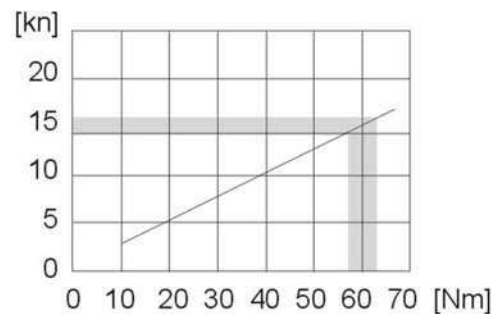


MILLING MACHINE ACCESSORIES

65085
scv
Self Centering Vise

Features:

- ▶ Suitable for 4th, 5th axis, CNC rotary table and horizontal/vertical CNC milling machine.
- ▶ Repeating center accuracy is $\pm 0.01\text{mm}$.
- ▶ Body is made of alloy steel and the rail is with high frequency heat treatment above HRC45° which achieve high wear resistance.
- ▶ Jaw face adopting full steel with heat treatment reach over HRC 55°, interchangeability is flexible.
- ▶ Lock tight system to prevent floating for better efficiency.


CLAMPING CURVE


Order No.	Model	A	B	C	D	E	F	G	H	J	K	L	M	N	N.W.
65085-01	SCV1275	127	127	42	33	30	3	46	51	63.5	63.5	101	96	96	7kg
65085-02	SCV1276		153					72	79	76.5					8kg
65085-03	SCV1278		210					129	135	105					9kg
65085-04	SCV12710		255					175	182	127.5					10kg

Unit:mm

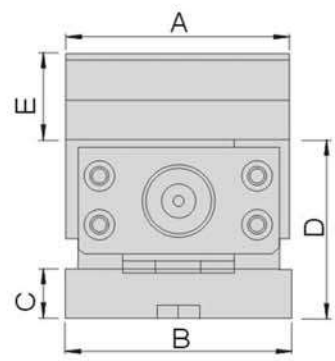
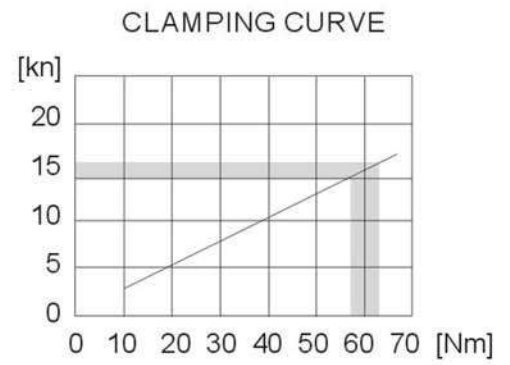
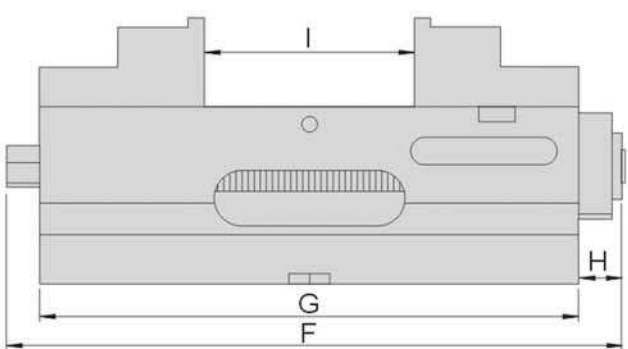
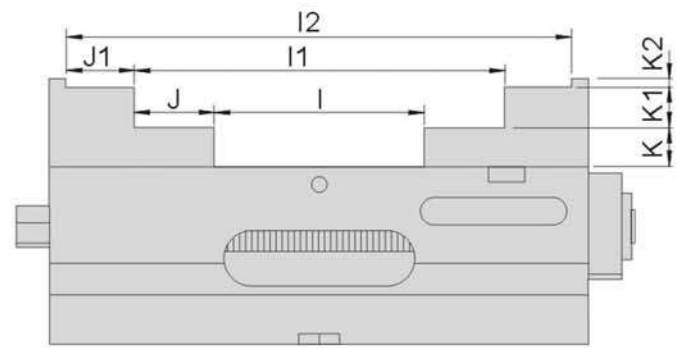
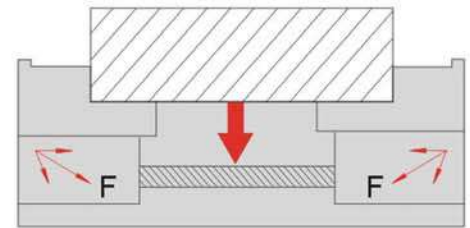
Milling Machine Accessories

65086 SCV Self Centering Vise



Features:

- ▶ Suitable for 4th, 5th axis, CNC rotary table and horizontal/vertical CNC milling machine.
- ▶ Repeating center accuracy is ± 0.01 mm.
- ▶ Body is made of FCD60 and the rail is with high frequency heat treatment above HRC45° which achieve high wear resistance.
- ▶ Jaw face adopting full steel with heat treatment reach over HRC 55°, interchangeability is flexible.
- ▶ Lock tight system to prevent floating for better efficiency.



Order No.	Model	A	B	C	D	E	F	G	H	I	I1	I2	J	J1	K	K1	K2	N.W.
65086-01	SCV60	59	60	18	60	25	143	120	13	0~50	38~85	--	17.5	--	12.5	12.5	--	4.5kg
65086-02	SCV100	100	101	22	80	40	260	240	20	0~90	70~160	134~222	35	31	18	18	4	17.5kg
65086-03	SCV160	160	161	22	105	55	440	370	70	0~200	86~285	--	42.5	--	27.5	27.5	--	47.5kg

Unit:mm

MILLING MACHINE ACCESSORIES

65087

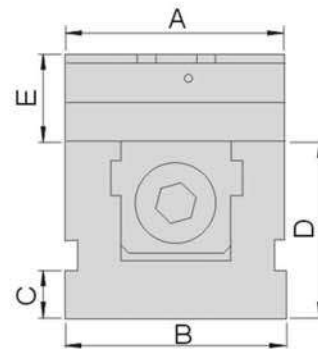
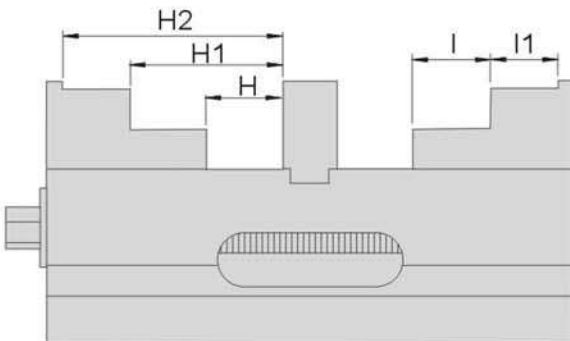
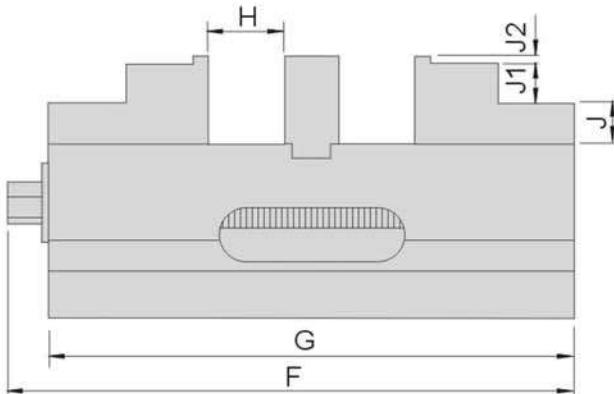
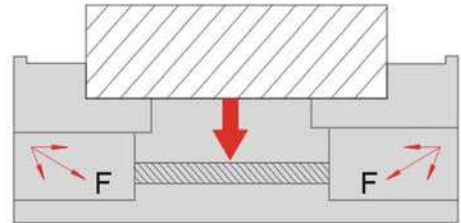
SDV100

Double-Lock Mechanical Vise



Features :

- ▶ Capable of clamping two different sizes workpieces at the same time.
- ▶ Fixed block in the middle can be dismantled for clamping larger workpiece.
- ▶ Suitable on small CNC machining center.
- ▶ Special angle lock design and effectively reduce the workpiece floating.
- ▶ Optional soft jaws are available on request.



銑床附件
 MILLING MACHINE ACCESSORIES

Order No.	Model	A	B	C	D	E	F	G	H	H1	H2	I	I1	J	J1	J2	N.W.
65087	SDV100	100	101	22	80	40	260	240	0~35	35~70	66~100	35	31	18	18	4	18.5kg

Unit:mm

Milling Machine Accessories

65088

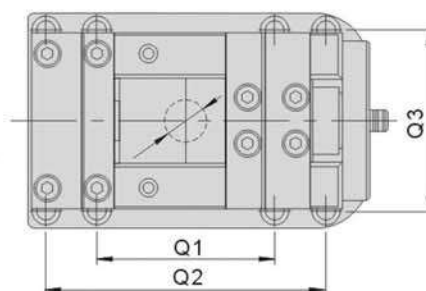
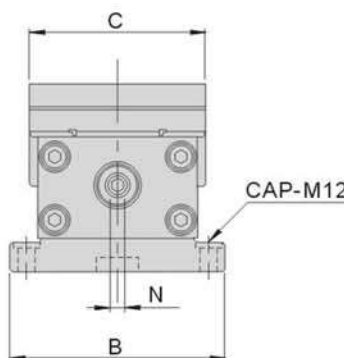
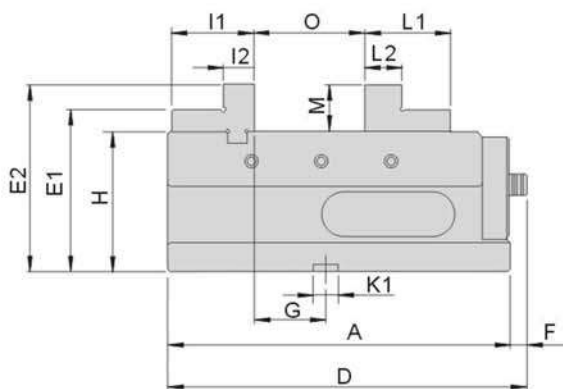
GEX-125

5-Axis Mechanical Power Vice



Features :

- ▶ Built-in mechanical booster, maximum steady clamping force up to 40KN, suitable for working on all kinds of hard and soft workpiece.
- ▶ Compact size well fit with 5-Axis MC machine center, horizontal and vertical machine center. It can also work with rotary device and relevant machine.
- ▶ Patented Mechanical Booster is fully sealed against dust, chips and cutting fluid for increasing durability.
- ▶ Unique Anti-Lift mechanism ensures the workpiece does not deflect and lift.
- ▶ SKS3 steel has applied to the body and the slide face is with high frequency heat treatment with above Hs60° in order to enhance the accuracy and the wear resistance.
- ▶ Jaw is made of S50C with carburising heat treated the hardness is above HRC54°.



Unit:mm

Order No.	Model	A	B	C	D	E	F	G	H	I1	I2	K1
65088	GEX-125	245	154	126	257	34	12	51	100	59	22	18

Order No.	Model	K2	L1	L2	N	O	Q1	Q2	Q2	Clamping Force	N.W.
65088	GEX-125	∅30	61	26	10	102	127	200	130	40KN	20kg

65089

ALT

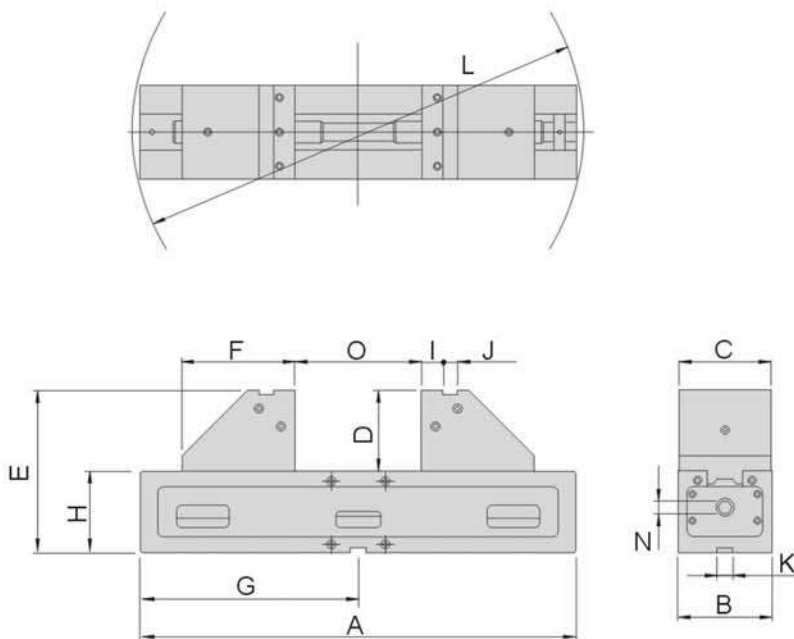
Anit-lift 5-Axis Machine Vise



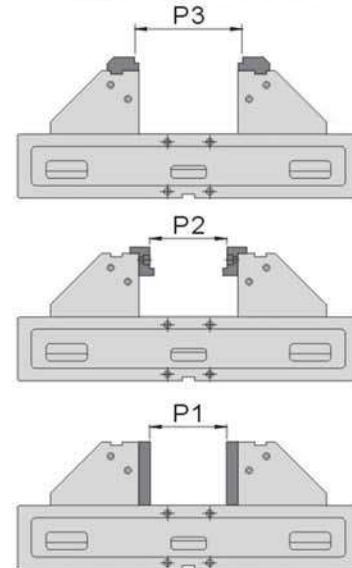
Features:

- ▶ Specially designed for 5-axis machining center and with higher structure to avoid interference of spindle.
- ▶ Anti-Lift mechanism & semi-spherical segment ensures workpiece does not lift and prevent workpiece loose from machining vibration.
- ▶ Both jaws are able to move simultaneously to shorten the distance.
- ▶ Rigid structure: FCD60 (vise body), & Alloy steel (Jaws) & slide surface is well hardened to maintain the accuracy as well as the wear resistance.
- ▶ Tolerance of center of workpiece clamp position and vise body within 0.01mm.

MILLING MACHINE ACCESSORIES



3 Ways Applications



Model	P1	P2	P3
ALT-100S	-	-	10~40
ALT-100M	0~44	12~44	10~84
ALT-100L	0~200	12~200	10~210

Unit:mm

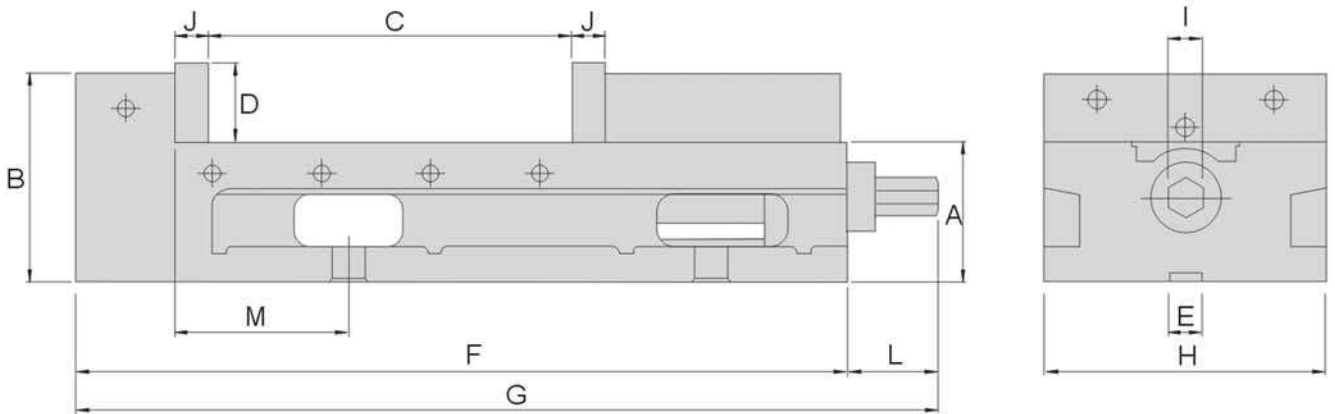
Order No.	Model	A	B	C	D	E	F	G	H	I	J	K	L	N	O	Force	N.W.
65089-01	ALT-100S	284				175		140	85				300		0~30		17kg
65089-02	ALT-100M	324	104	102	90	175	125	162	85	24	16	18	350	14	0~74	20KN	20kg
65089-03	ALT-100L	484				180		242	90				500		10~232		30kg

Milling Machine Accessories

65100 GH Super-open Angle Vice

Features:

- ▶ Large opening design.
- ▶ One piece body design with precisely ground on both sides.
- ▶ Angle lock design ensure no floating when clamping.
- ▶ Fixed height and capable for simultaneously application.



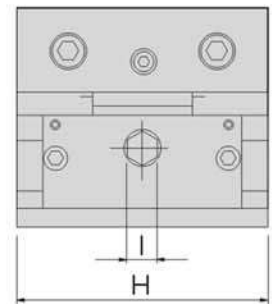
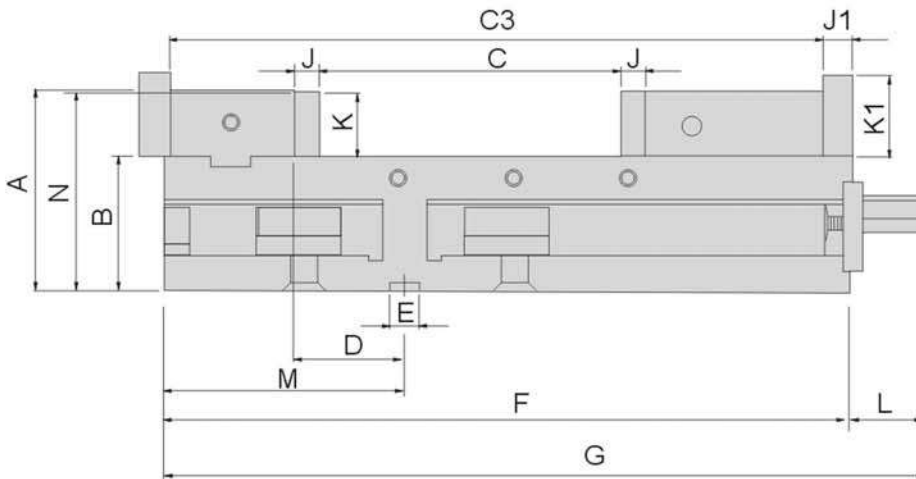
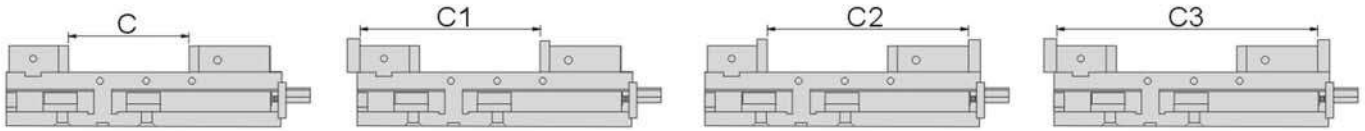
Order No.	Model	A	B	C	D	E	F	G	H	I	J	L	M	N.W.
65100-01	GH-6" Super-Open 8"	121	115	205	44	18	425	475	156	19	18	50	95	30kg
65100-02	GH-8" Super-Open 12"	120	145	310	63	18	560	610	202	19	18	50	100	60kg

Unit:mm

Order No.	Model	65100-01		65100-02		65100-01		65100-02	
65100-01	GH-6" Super-Open 8"	200	8	273	102 ^{23/25}	348	13 ^{23/25}	421	162 ^{1/5}
65100-02	GH-8" Super-Open 12"	300	12	393	15 ^{3/4}	462	14 ^{12/25}	555	22 ^{1/5}

Features :

- ▶ Large opening design.
- ▶ Made FCD60 Ductile Iron with higher accuracy.
- ▶ Angle lock design ensure no floating when clamping.
- ▶ Fixed height and capable for simultaneously application.
- ▶ Suitable for conventional milling machine and CNC milling machine.



Unit:mm

Order No.	Model	A	B	C	C1	C2	C3	D	E	F	G
65110-01	HVG-6"	120	80	187	276	307	397	68	18	419	463
65110-02	HVG-8"	136	84	325	430	460	550	76	18	556	622

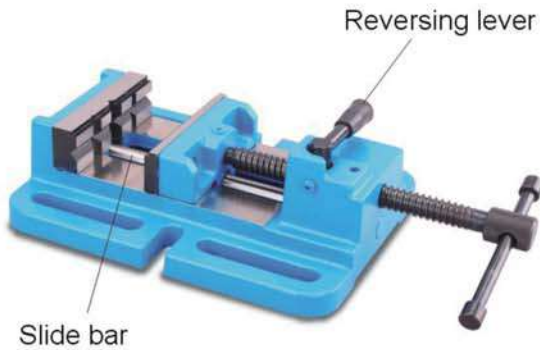
Order No.	Model	H	I	J	J1	K	K1	L	M	N	N.W.
65110-01	HVG-6"	154	19	15	18	39.5	50	44	154	119.5	37kg
65110-02	HVG-8"	202	19	18	21	51.5	60	66	168	135.5	60kg

Milling Machine Accessories

65118

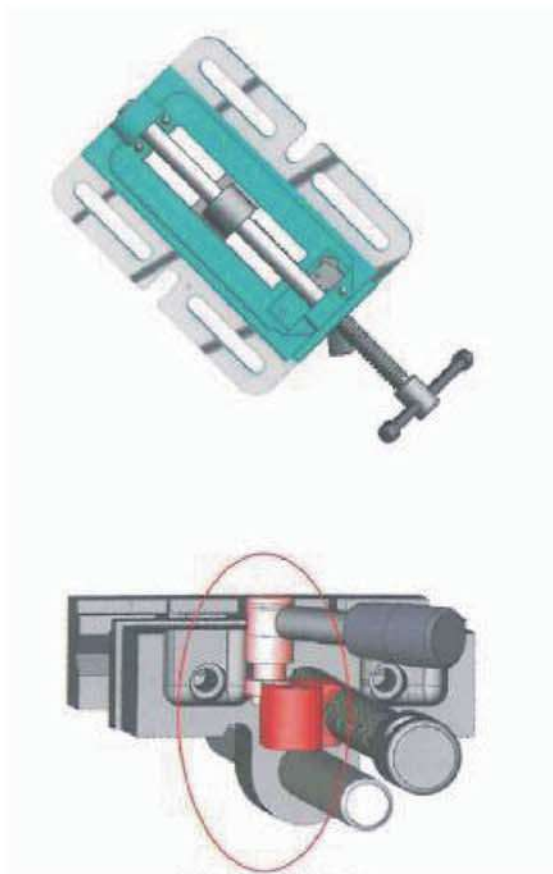
HDC100

Super Quick Jaw Vise

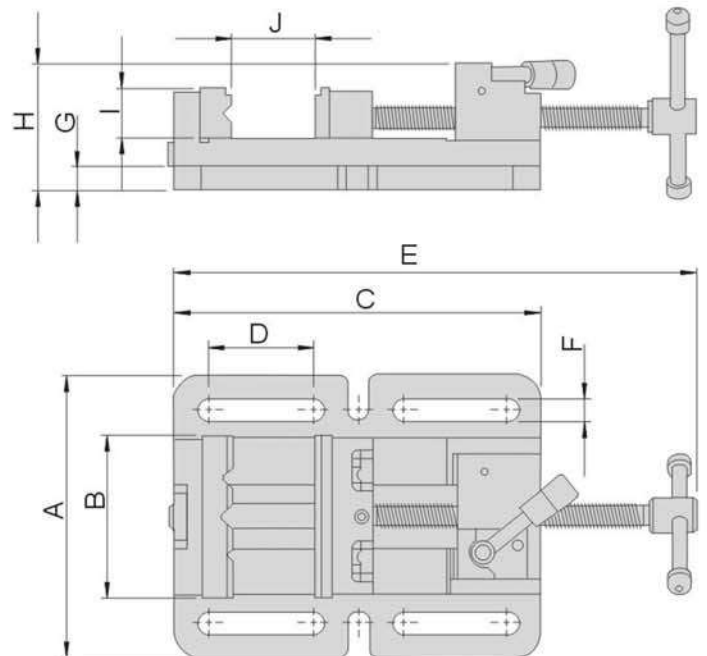


Features:

- ▶ Suitable for clamping work piece on drill press machine or milling machine.
- ▶ Quick motion mechanism design makes clamping and releasing work piece promptly by swiveling the reversing lever.
- ▶ Slide bar design makes work piece is firmly fixed by jaw pair without any inclined situation of the jaws.
- ▶ Designed with solid structure, main body is made of FC15, assemble a pair of heat treated steel jaws with hardness HRC45°~50°.
- ▶ Jaw pair and handle are surface treated by oxide finish.
- ▶ Front fixed prismatic jaw with cross V-grooves is designed for clamping work piece firmly in both vertical & horizontal directions.



Quick motion mechanism



Order No.	Model	A	B	C	D	E	F	G	H	I	J	Max.clamping force	N.W.
65118	HDC100	180	104	235	66.5	390	14	16.5	73	32	105	1000kgs	6.5kg

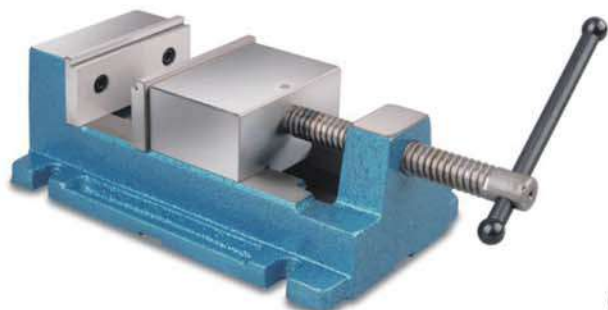
Unit:mm

Milling Machine Accessories

65120

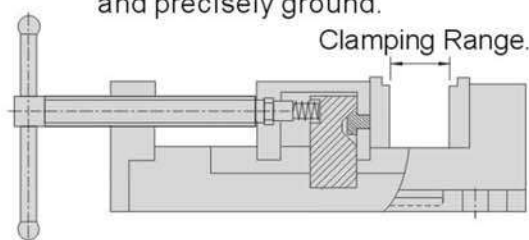
HDV

Angle Lock Drill Press Vice



Features:

- ▶ Angle Lock Mechanism produces downward pressure on Jaw during clamping, ensuring that both jaws are parallel and workpiece is held accurately.
- ▶ Made of high tensile FCD55 Ductile Iron.
- ▶ Slideway and underside of vice are precisely ground.
- ▶ The Stepped Jaw Plates are hardened to HRC 50° and precisely ground.



Unit:mm

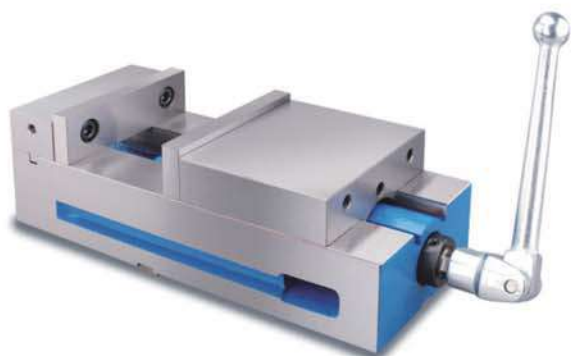
Order No.	Model	Jaw Plate Height	Jaw Plate Width	Clamping Range.	N.W.
65120-100	HDV-100	43	100	0~90	6.6kg
65120-130	HDV-130	43	130	0~90	8.2kg

MILLING MACHINE ACCESSORIES

65130

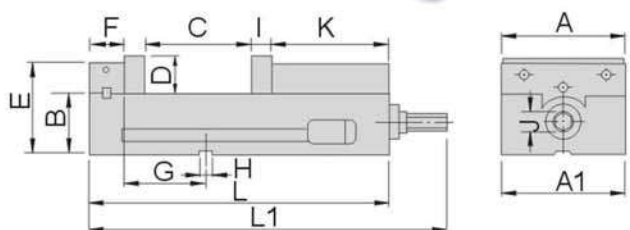
HLG

Lock-Tight Precision Machine Vice



Features:

- ▶ Lock-tight system ensures the workpiece does not lift.
- ▶ 80,000 PSI (FCD60) Ductile Iron body, HRC 45° hardened.
- ▶ Sealed bearing system reduces clamping pressure and increase bearings life.
- ▶ Clamping force reaches 8,200lbs (37800N)
- ▶ Angle Lock Mechanism produces downward pressure on Jaw during clamping, ensuring that both jaws are parallel and workpiece.
- ▶ Horizontal/Vertical dual-use type is optional.



Unit:mm

Order No.	Model	A	A1	B	C	D	E	F	G	H	I	J	K	L	L1	N.W.
65130-40	HLG40H	102	105	68	125	40	100	47	82.6	18	21	14	106	330	372	21kg
65130-50	HLG50H	127	128	70	158	38	104	45	73	18	17	19	117	360	410	26kg
65130-60	HLG60H	153	154	73	150	44.5	111	57	123	18	18	19	140	390	455	36.5kg
65130-60L	HLG60HL	150	152	92	280	44	138	46	84	18	18	19	125	485	540	41kg

Milling Machine Accessories

65136/38

HMG/HMR

Multifunctional Machine Vise

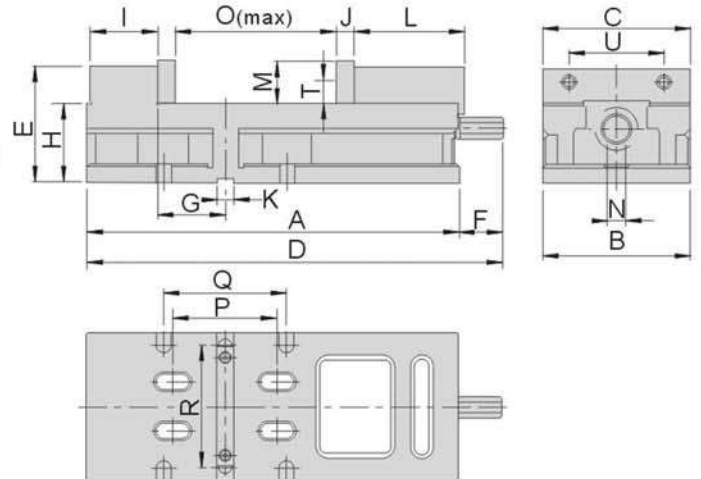
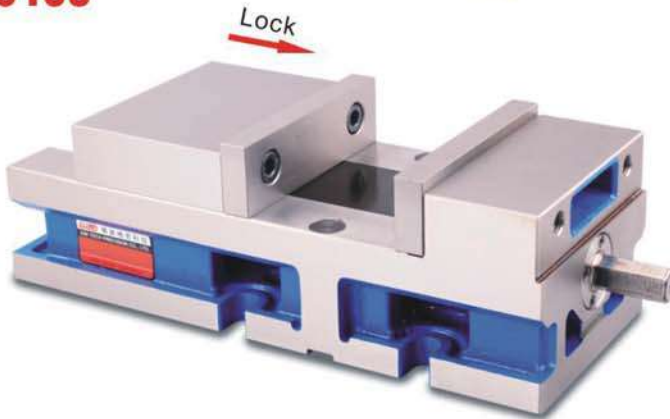
65136



Features :

- ▶ Prevents lift of workpiece and high accuracy.
- ▶ All faces are precisely ground and so triple usage; vertical & horizontal and side ways.
- ▶ Material of 80,000PSI FCD-60 Ductile Iron body with hardened HRC45°.

65138



Order No.	Model
65136-40	HMG40
65136-60	HMG60
65138-40	HMR40
65138-60	HMR60

Unit:mm

Order No.	A	B	C	D	E	F	G	H	I	J
HMG / HMR40	316	104	102	344	91.5	28	63.5	63.5	50.8	15
HMG / HMR60	385	152.45	151	431.8	118.7	46.8	69.84	81	69.9	18

Order No.	K	L	M	N	O	P	Q	R	T	U	N.W.
HMG / HMR40	12.7	100	35	14	130	85	101.6	80	17.5	63.5	20kg
HMG / HMR60	18	114.3	44.5	19	163	107.95	127	127	23.8	98.4	31kg


Features:

- ▶ Economic type.
- ▶ Jaw perpendicularity and parallelism within 0.05mm
- ▶ Induction and Flame Hardening Processes, HRC40°-45°
- ▶ Angle design for the slide, 45° down force when clamped.
- ▶ Graduation reading on the base 360° swivel.
- ▶ Vise and base can be ordered separately.



Unit:mm

Order No.	Model					N.W.
65140-40	HLV40	107	154	220	271	19.0kg
65140-50	HLV50	110	163	249	304	28.9kg
65140-60	HLV60	150	220	305	368	38.0kg
65140-80	HLV80	198	264	402	476	69.5kg

Order No.	Model	A	a	B	B1	b	C	E	E1	H	L
65140-40	HLV40	103	230	58	172	242	107	87	30	14	318
65140-50	HLV50	133	256	66	210	280	110	98	32	14	355
65140-60	HLV60	150	300	72	238	326	150	110	39	24	418
65140-80	HLV80	210	380	85	301	420	200	136	45	24	555

Milling Machine Accessories

65150 HAT Precision Angle Lock Machine Vise

HAT-660

6.0" Opening

HAT-675

7.5" Opening

HAT-689

8.9" Opening

Spindle nut does not protrude over the end of body.

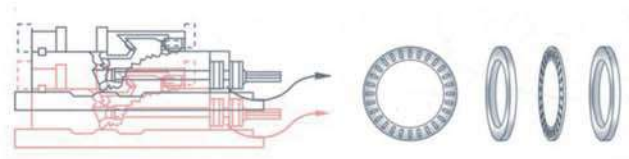
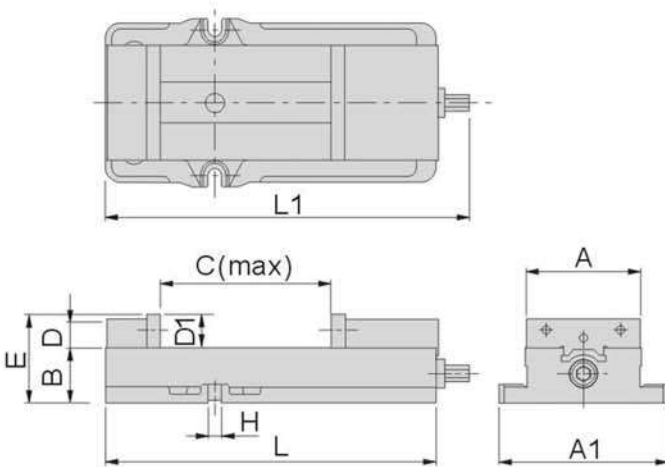
HAT-810

10" Opening

Clamping Force: 11,600IBS.

Features:

- ▶ Ultra-precision in datum sliding surface, parallelism and perpendicularity.
- ▶ Anti-floating structure, reduce the floating when clamping.
- ▶ 80,000PSI FCD-60 Ductile Iron body with hardened HRC45°.
- ▶ Standard distance from T-slot to fixed Jaw.
- ▶ Sealed bearing system reduces clamping force and increases bearings life.
- ▶ Fixed jaw has machined T-slot for alignment of the vise and in
- ▶ Clamping Force 8200lbs (37800N)
- ▶ Jaw plate perpendicularity and parallelism is within 0.03mm.



8200lbs Clamping Force

Anti-floating System

Sealed Bearing System

Ductile Iron Body.

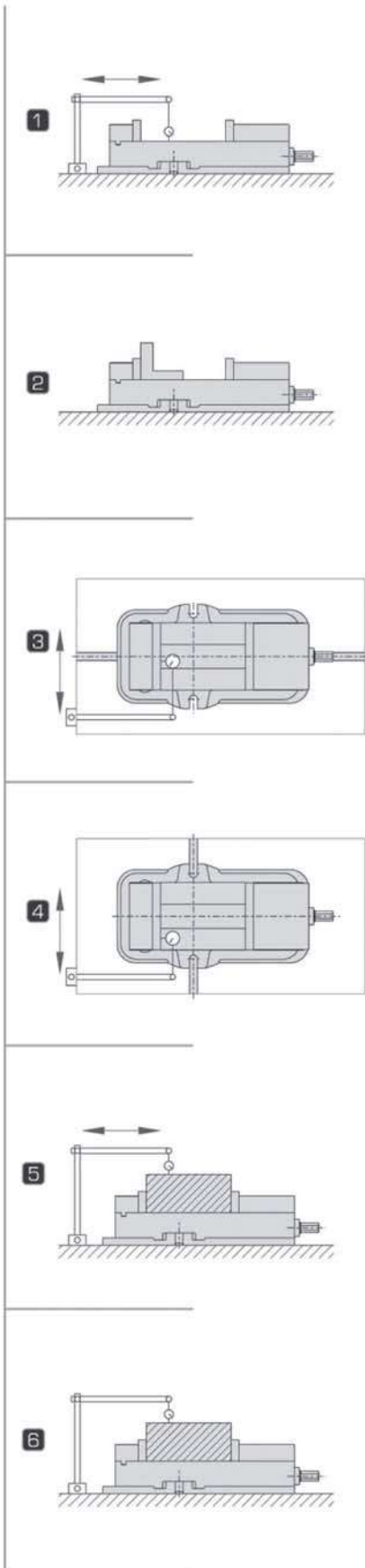


Unit:mm

Order No.	Model	A	A1	B	C	D	D1	E	H	L	L1	N.W.
65150-660	HAT660	152	238	72	156	38	44.5	114.0	18	405	435	28.4kg
65150-675	HAT675	152	235	73.025	192	38	44.5	117.525	18	432	485	32.3kg
65150-689	HAT689	152	222	73.025	226	38	44.5	117.525	18	437	481	34.3kg
65150-810	HAT810	203	295	84.074	265	50	56	140.074	21	555	585	66.4kg

65150 HAT Precision Angle Lock Machine Vice

Static



HAT660



HAT675

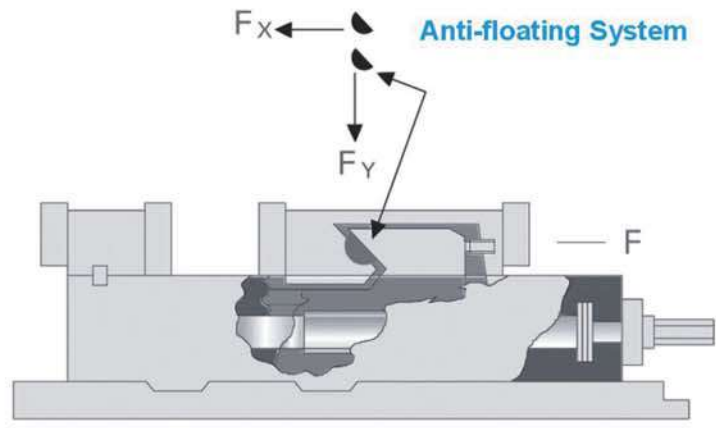


HAT689

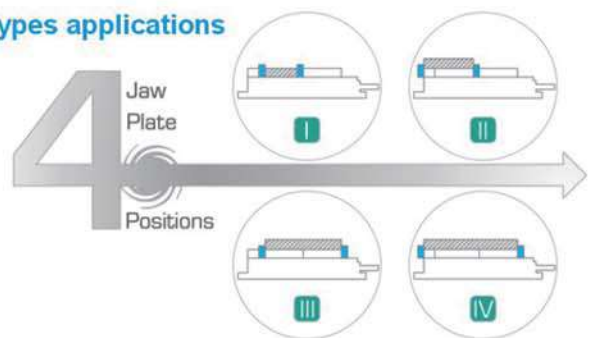


HAT810

MILLING MACHINE ACCESSORIES



Four types applications

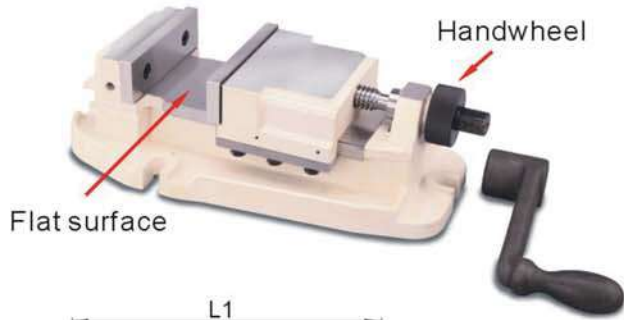


Milling Machine Accessories

65155

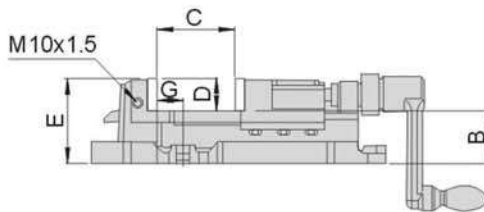
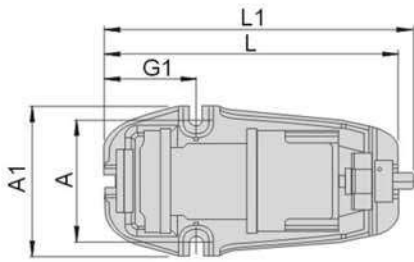
MBV

Precision Machine Vise



Features:

- ▶ Flat surface no slot between slide guide rail preventing chip burr go inside.
- ▶ Material of 80,000PSI FCD-60 Ductile Iron body with hardened HRC45°.
- ▶ Special design of handwheel at the end of screw rod shaft for fast operation.



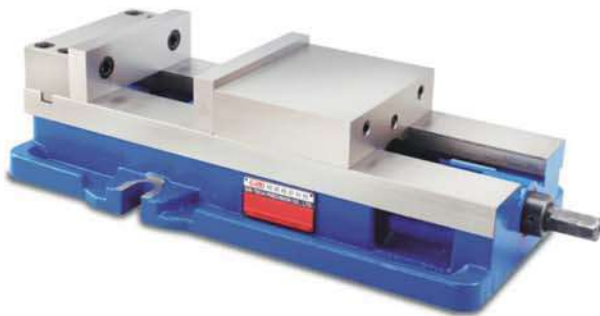
Unit:mm

Order No.	Model	A	A1	B	C	D	E	G	G1	L	L1	N.W.
65155-125	MBV125	130	184	65	93.9	40	105	31	111	358	375.9	21kg
65155-150	MBV150	150	214	70	117	45	115	40	145	467	489	28kg

65158

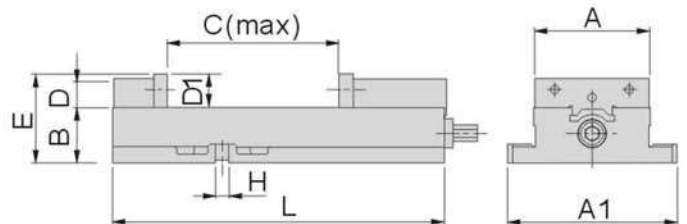
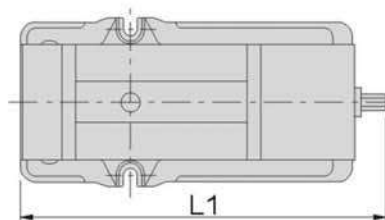
EAT690

Precision Angle Lock Machine Vise



Features:

- ▶ Adopting high-frequency induction heating with HRC40°~45°.
- ▶ Angle lock design, it has clamping 45 downforce preventing workpiece lifting.
- ▶ Jaw plate perpendicularity and parallelism is within 0.05mm.



Unit:mm

Order No.	Model	A	A1	B	C	D	D1	E	H	L	L1	N.W.
65158	EAT690	152	225	73	229	37	45	118	18	440	495	34.3kg

Milling Machine Accessories

65160

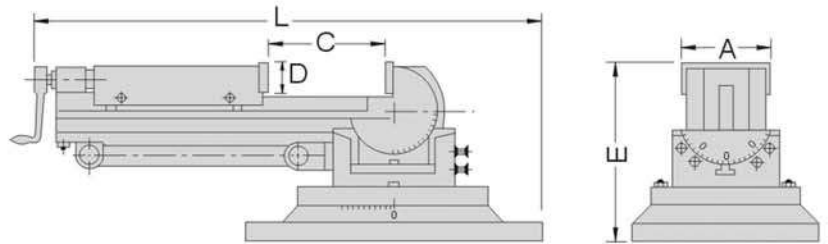
VW

Universal 3-way Angle Vise



Features:

- ▶ Angles can be set in three dimensions.
- ▶ 360° swivel base with graduation.
- ▶ Can tilt up to 90° from horizontal to vertical, 45° incline for left & right.
- ▶ Safety lock for three way setting.



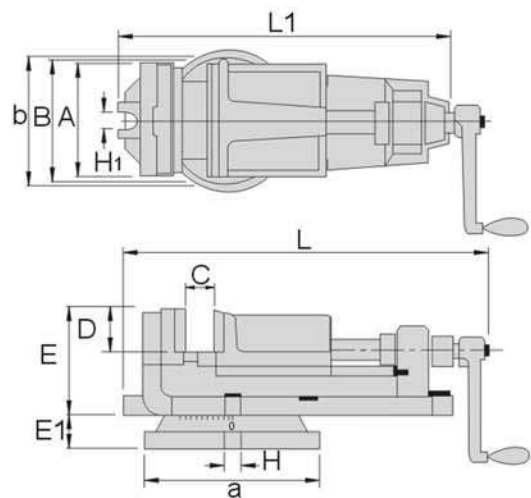
Unit:mm

Order No.	Model	A	C	D	E	L	Vertical Height	N.W.
65160-03	VW3	80	0-90	30	150	396	386	14.5kg
65160-04	VW4	106	0-105	38	172	460	470	32.7kg
65160-05	VW5	132	0-140	40	205	625	590	49.6kg

65170

HK

K-type Machine Vise



Unit:mm

Order No.	Model	A	a	B	b	C	D	E	E1	H	H1	L	L1	N.W.
65170-15	HK150	150	245	160	175	0-114	40	105	40	13	13	462	421	26kg
65170-20	HK200	200	340	215	230	0-150	58	144	45	17	17	620	576	54.7kg

65180

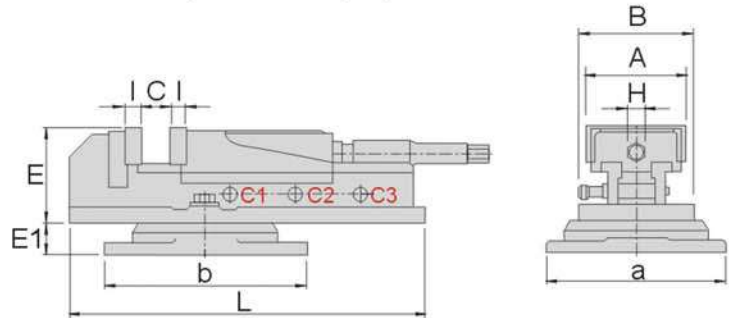
HH

Super-open Milling Vise



Features :

- ▲ Made of hardened Alloy Steel and precisely ground.
- ▲ Except for the hydraulic system, other features are same as (65200 HVA) Hydraulic vise.



Unit:mm

Order No.	Model	A	a	B	b	Clamping Range				E	E1	H	I	L	N.W.
						C	C1	C2	C3						
65180-400	HH400	102	204	148	224	0-200	0-67	65-133	130-200	105	35	19	15	394	22.7kg
65180-600	HH600	148	256	200	280	0-275	0-92	90-183	180-275	142	32	19	15	535	44.3kg
65180-800	HH800	210	300	250	336	0-336	0-112	110-224	220-336	144	40	19	15	605	67.8kg

MILLING MACHINE ACCESSORIES

65190

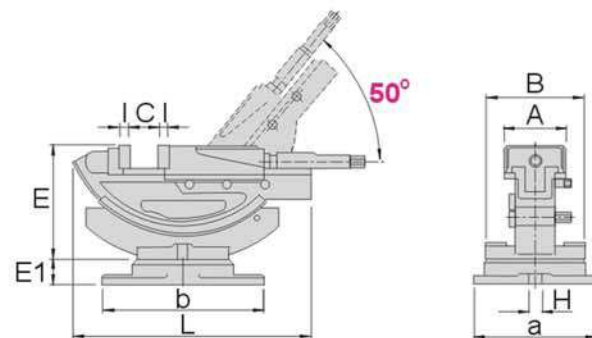
HHY

Tilting Super-open Vise



Features :

- ▲ Tilt up and down with swivel base 360°.
- ▲ High quality casting with ground finish.
- ▲ Simple operation, 4 holes can be firmly & rapidly clamped.
- ▲ HHY150 with jaw opening 310mm which 2 times larger than the normal milling vise.
- ▲ Except for the hydraulic system, other features are same as (65210 HVW) Hydraulic vise.



Unit:mm

Order No.	Model	A	a	B	b	Clamping Range				E	E1	H	I	L	N.W.
						C	C1	C2	C3						
65190-100	HHY100	105	228	168	270	0-170	0-57	55-114	110-170	195	42	19	15	405	29kg
65190-150	HHY150	154	300	238	336	0-310	0-100	98-200	198-300	214	40	19	15	485	56.9kg

65200

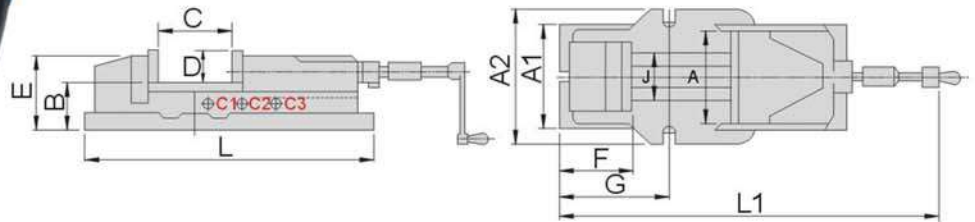
HVA

Hydraulic Machine Vise



Features:

- ▶ Made of hardened Alloy Steel and precisely ground.
- ▶ With hydraulic system, workpieces are easily clamped.



Unit:mm

Order No.	Model	A	A1	A2	B	Clamping Range				D	E	F	G	J	L	L1	Force	Body (N.W.)	Base (N.W.)
						C	C1	C2	C3										
65200-100	HVA100	105	135	170	58	0-170	0-57	55-114	112-170	36	95	95	147	80	440	525	2500kgf	21kg	7kg
65200-125	HVA125	130	175	207	70.5	0-220	0-73	72-146	145-220	48	120	107	195	97	550	670	3000kgf	38kg	8kg
65200-150	HVA150	150	182	225	82.5	0-300	0-100	98-200	198-300	53	135	117	240	116	620	800	4500kgf	53kg	11kg
65200-200	HVA200	200	260	280	100	0-300	0-100	99-200	198-300	62	162	150	260	160	680	900	8000kgf	95kg	13kg

65210

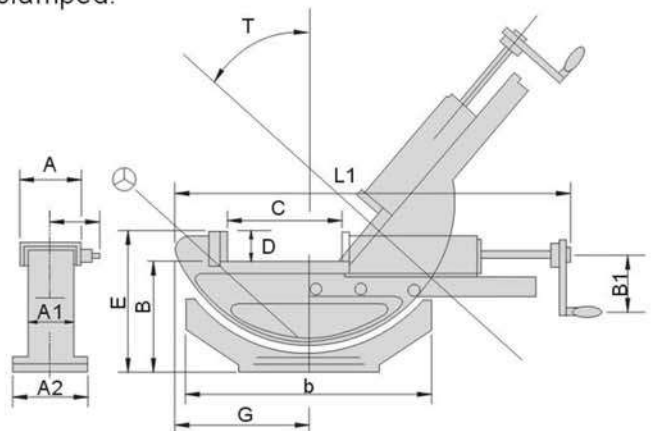
HWV

Tilting Hydraulic Machine Vise



Features:

- ▶ Tilt up and down with swivel base 360°.
- ▶ High quality casting with ground finish.
- ▶ With hydraulic system, workpieces are easily clamped.



Unit:mm

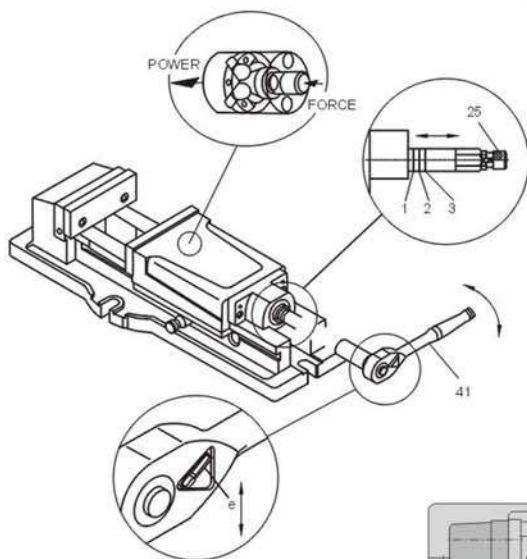
Order No.	Model	A	A1	A2	B	B1	b	Clamping Range				D	E	G	L1	T	Body (N.W.)	Base (N.W.)
								C	C1	C2	C3							
65210-100	HWV100	100	65	160	141	80	325	0-170	0-57	55-114	110-170	36	177	170	505	50°	22.5kg	4.0kg
65210-150	HWV150	150	95	240	186	100	410	0-300	0-100	98-200	198-300	51	237	200	775	50°	68.5kg	10.0kg

Milling Machine Accessories

65220

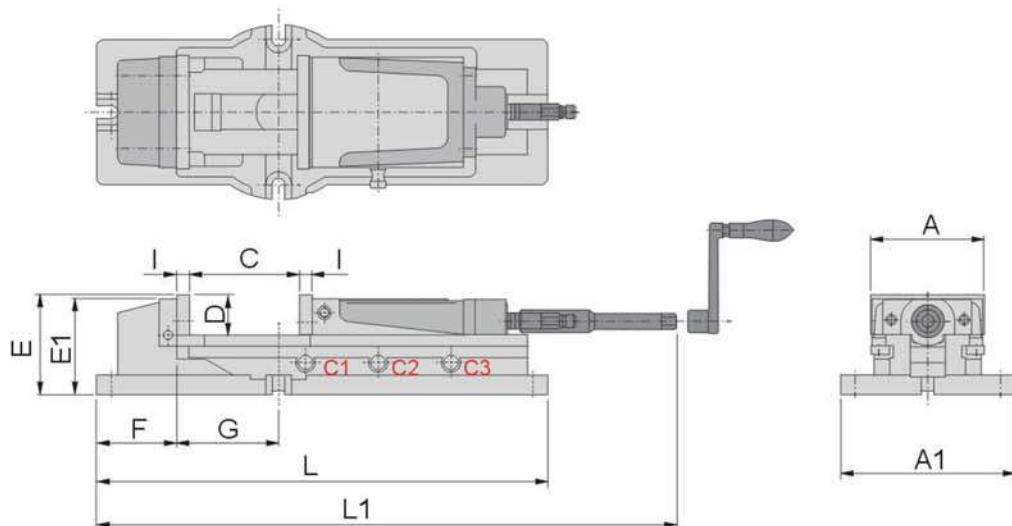
HMP

Mechanical Power Machine Vise



Features:

- ▶ Unique ball design structure to provide superb clamping force with holding strength to enhance the processing accuracy.
- ▶ Many tones of pressure can be applied to workpieces with little effort while operating the
- ▶ HMP vise, which will never loosen the grip on a workpiece by itself. Loosen can be done manually.
- ▶ Suitable for milling, grinding, drilling, shaping and production as any other types of usage.



Unit:mm

Order No.	Model	Clamping Range			
		C	C1	C2	C3
65220-50	HMP50	0-220	0~72	70~140	135~220
65220-60	HMP60	0-300	0~100	98~200	195~300
65220-80	HMP80	0-300	0~100	98~200	195~300

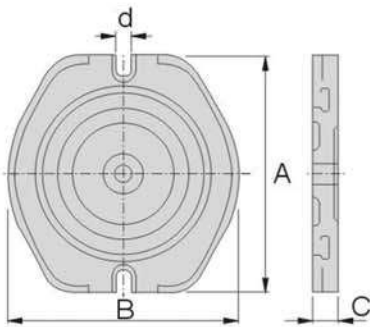
Order No.	Model	A	A1	D	E	E1	F	G	I	L	L1	N.W.
65220-50	HMP50	130	185	46	118	117	105	82	15	538	670	37.9kg
65220-60	HMP60	154	225	54	133	132	100	140	17	620	800	56.8kg
65220-80	HMP80	206	280	62	162	160	135	118	21	700	900	96.3kg

Features:

- ▶ Hydraulic power can be applied separately, both also can be used at the same time with max clamping force 6,000 kg
- ▶ Down thrust semi-sphere segment mechanism eliminates jaw lifting and work tilt.
- ▶ Slide and the surface are precision ground.
- ▶ Made of Ductile Iron FCD60.
- ▶ Vise bed flame hardened to HRC 45 °to ensure long lasting wear-resistance and accuracy.
- ▶ Most suitable for milling processing, molding purposes.

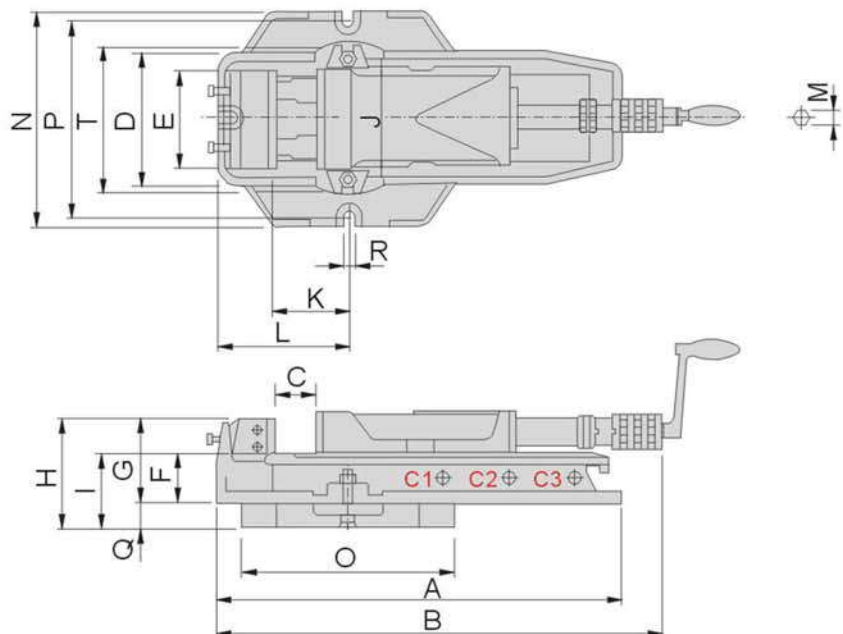


Swivel Base (Optional)



單位:mm

Order No.	A	B	C	Weight(kg)
GPHV-125	280	266	32	12
GPHV-160	330	310	35	16
GPHV-200	375	355	40	16



Order No.	Model	A	B		Clamping Range				D	E	F	G	H	I	J	L	M	N	O	P	Q	R	T	Force (kgf)	N.W.
			Min.	Max.	C	C1	C2	C3																	
65230-01	GPHV-125	505	570	795	0~220	0~72	70~140	135~220	170	130	72	127	160	106	75	180	14	280	266	260	32	16	190	3500	40kg
65230-02	GPHV-160	605	625	935	0~310	0~102	100~205	200~310	210	160	82	140	192	117	101	195	14	334	320	310	35	18	240	4000	70kg
65230-03	GPHV-200	700	725	1035	0~310	0~102	100~205	200~310	240	200	100	163	240	146	115	265	14	420	420	390	50	18	280	6000	115kg

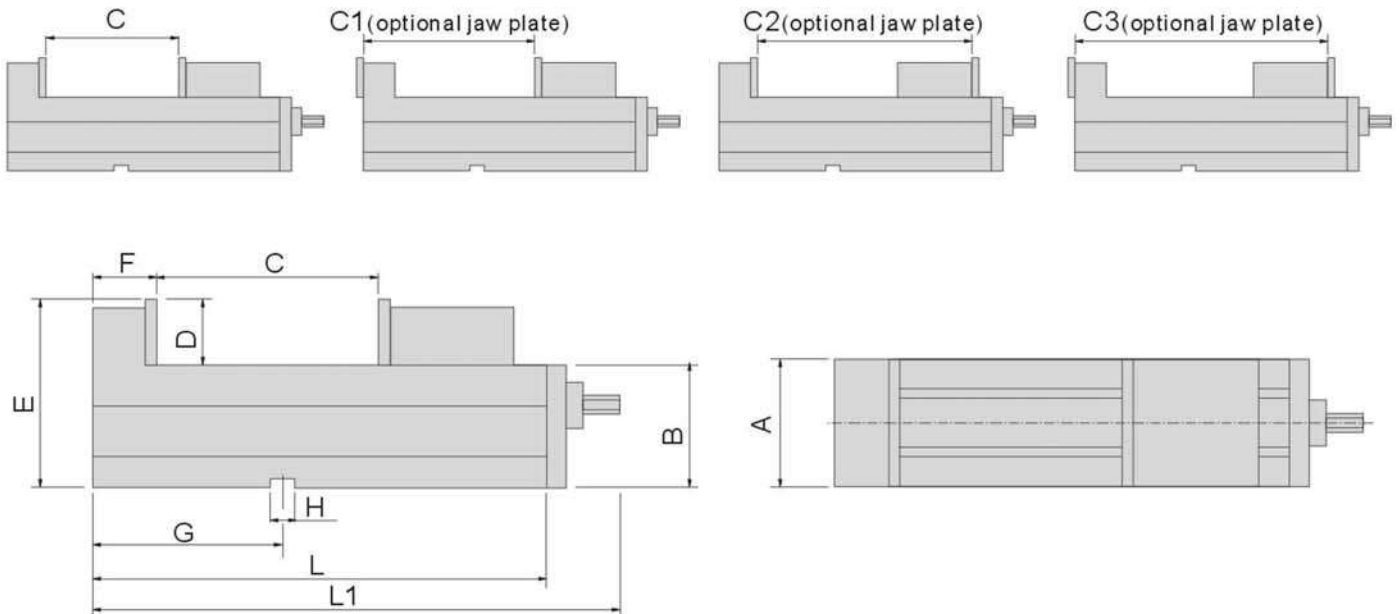
Unit:mm

Milling Machine Accessories

65270 GCV Precision Mechanical Machine Vise

Features :

- ▶ Mechanical constructure.
- ▶ Suitable for vertical/horizontal milling machine, can be applied parallel.
- ▶ Down thrust semi-sphere segment mechanism eliminates jaw lifting and work tilt.
- ▶ Slide and the surface are precision ground.
- ▶ Made of Ductile Iron FCD60 JIS (60kgs/mm² / 80000psi).
- ▶ Vise bed flame hardened to HRC 45° to ensure long lasting wear-resistance and accuracy.



Unit:mm

Order No.	Model	A	B	Clamping Range				D	E	F	G	H	L	L1	N.W.
				C	C1	C2	C3								
65270-01	GCV-100	101	85	125	190	230	320	48	133	80	125	16	340	470	26kg
65270-02	GCV-130	131	95	180	240	290	380	55	150	85	150	18	405	535	39kg
65270-03	GCV-160	161	105	240	320	360	470	58	163	100	165	18	495	625	57kg
65270-04	GCV-200	201	110	280	360	420	540	63	173	108	190	18	570	700	86kg

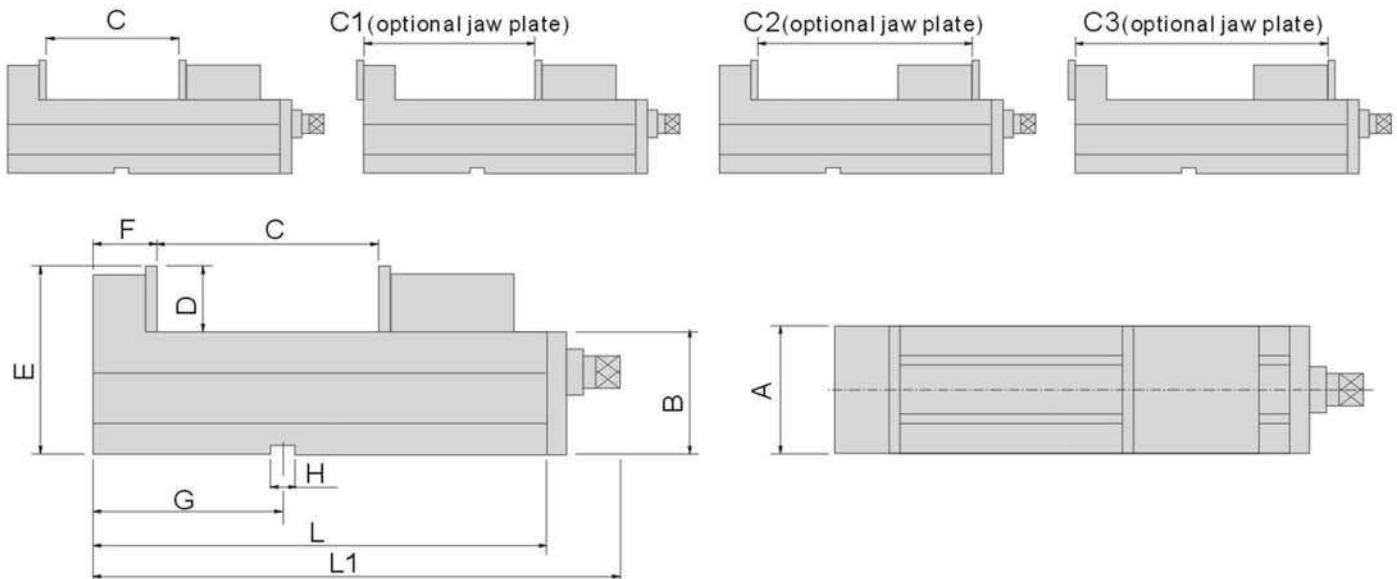
65280 GCHV Precision Hydraulic Machine Vise



Features:

- ▶ Hydraulic constructure.
- ▶ Suitable for vertical/horizontal milling machine, can be applied parallel.
- ▶ Down thrust semi-sphere segment mechanism eliminates jaw lifting and work tilt.
- ▶ Slide and the surface are precision ground.
- ▶ Made of Ductile Iron FCD60 JIS (60kgs/mm² / 80000psi).
- ▶ Vise bed flame hardened to HRC 45° to ensure long lasting wear-resistance and accuracy.

MILLING MACHINE ACCESSORIES



Unit:mm

Order No.	Model	A	B	Clamping Range				D	E	F	G	H	L	L1	Force (kgf)	N.W.
				C	C1	C2	C3									
65280-01	GCHV-100	101	85	125	190	230	320	48	133	80	125	16	340	470	4000	27kg
65280-02	GCHV-130	131	95	180	240	290	380	55	150	85	150	18	405	535	4000	40kg
65280-03	GCHV-160	161	105	240	320	360	470	58	163	100	165	18	495	625	5500	58kg
65280-04	GCHV-200	201	110	280	360	420	540	63	173	108	190	18	570	700	6900	87kg

Milling Machine Accessories

65290

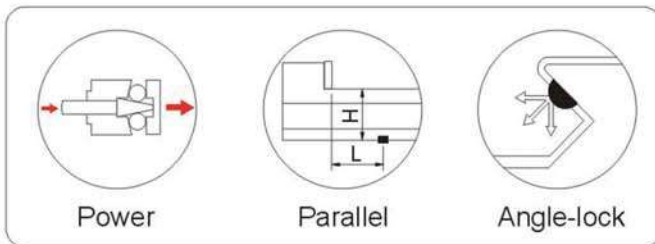
GMV

Precision Machine Vise



Features:

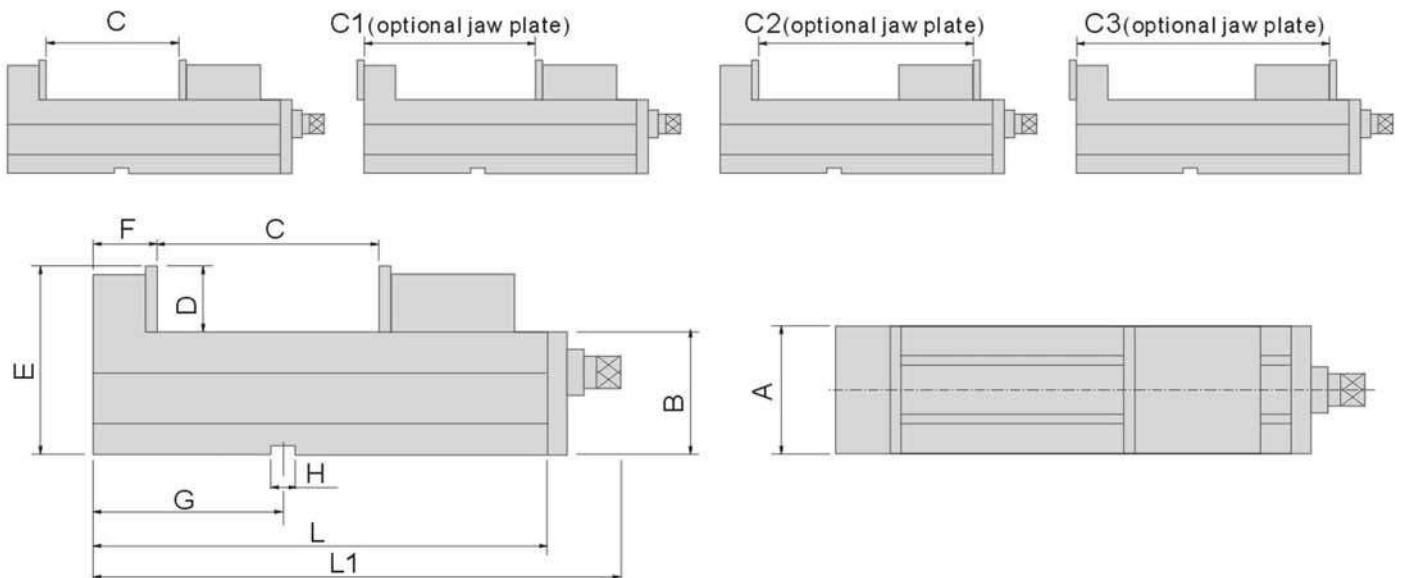
- ▶ Mechanical power can be applied separately, both also can be used at same time and can be applied in parallel.
- ▶ Down thrust semi-sphere segment mechanism eliminates jaw lifting and work tilt.
- ▶ Slide and the surface are precision ground.
- ▶ Made of Ductile Iron FCD60 JIS (60kgs/mm² / 80000psi).
- ▶ Vise bed flame hardened to HRC 45° to ensure long lasting wear-resistance and accuracy.



Power

Parallel

Angle-lock

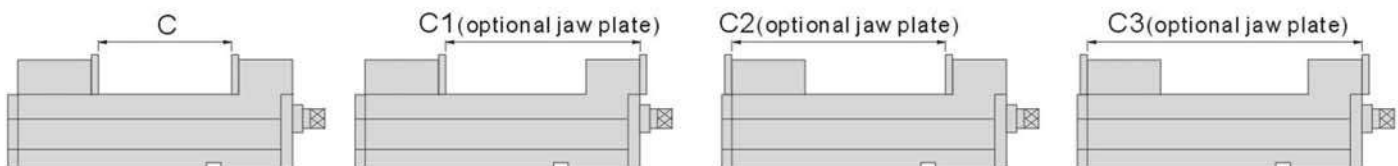
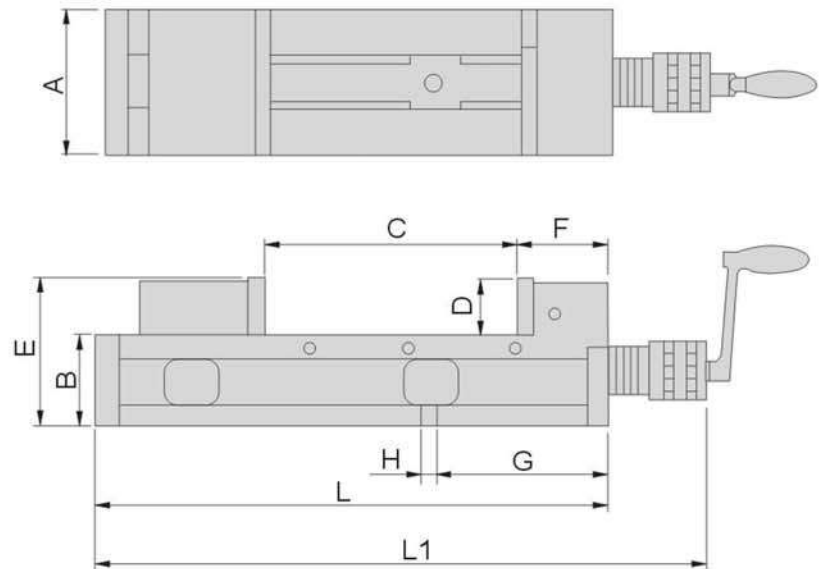


Unit:mm

Order No.	Model	A	B	Clamping Range				D	E	F	G	H	L	L1	Force (kgf)	N.W.
				C	C1	C2	C3									
65290-01	GMV-100	101	85	145	190	230	320	48	133	80	125	16	340	470	3500	27kg
65290-02	GMV-130	131	95	220	240	290	380	55	150	85	150	18	405	535	4000	40kg
65290-03	GMV-160	161	105	300	330	370	480	58	163	100	165	18	505	635	4000	58kg
65290-04	GMV-200	201	110	340	370	430	550	63	173	108	190	18	580	710	4500	87kg

Features:

- ▶ Adopting fixed jaw on near side of the operator, makes easier for loading & unloading, increase efficiency and less fatigue.
- ▶ Made of Ductile Iron FCD60 JIS (60kgs/mm²). Anti-float structure, suitable for applying heavy duty milling job in machining center...



Unit:mm

Order No.	Model	A	B	Clamping Range				D	E	F	G	H	L	L1	Force (kgf)	N.W.
				C	C1	C2	C3									
65320	GAHV-160	160	100	280	380	450	550	60	160	100	200	18	570	647	5000	90kg

Milling Machine Accessories

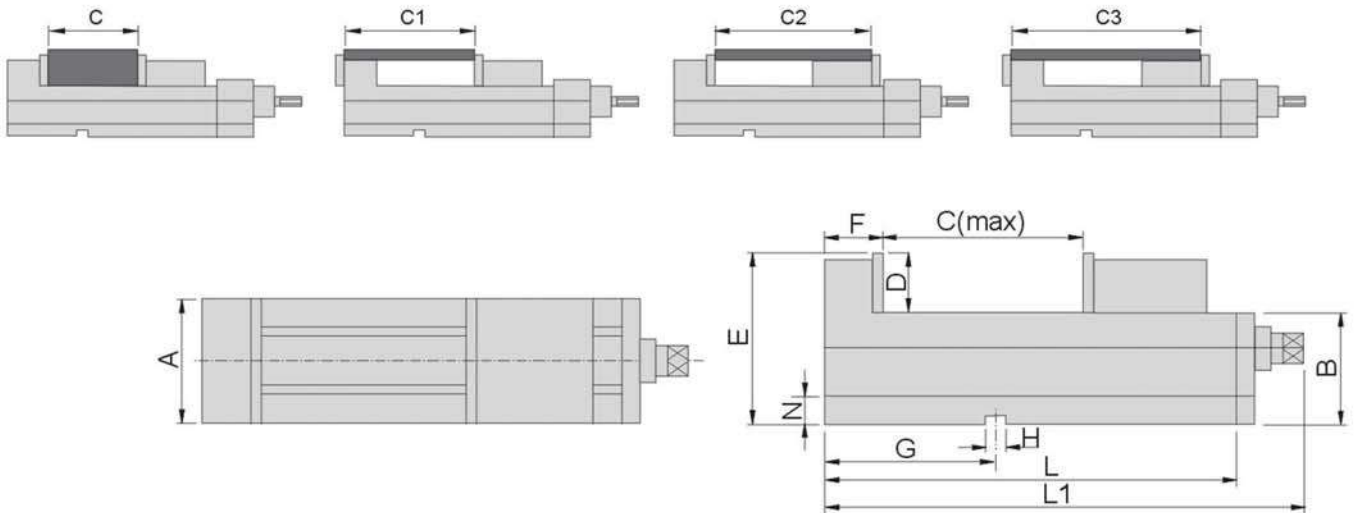
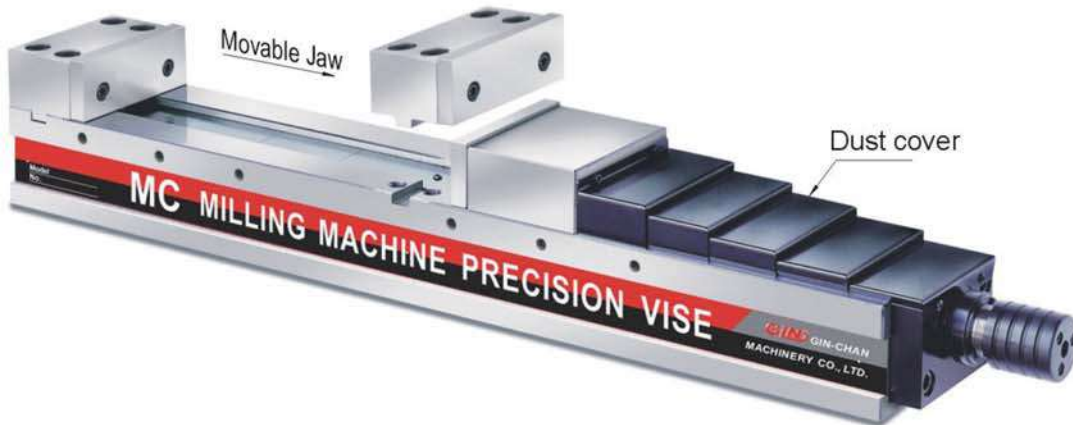
65330

MHV

Precision Hydraulic Vise (Long Opening)

Features :

- ▶ Long opening design.
- ▶ Made of Ductile Iron FCD60 JIS (60kg/mm²).



NOTE: Remove the dust cover to extend 90mm clamping range.

Unit:mm

Order No.	Model	Clamping Range			
		C	C1	C2	C3
65330-01	MHV-160LS	0~400	495	510	615
65330-02	MHV-200LS	0~490	590	605	715
65330-03	MHV-160L	300~650	745	760	865
65330-04	MHV-200L	400~730	830	845	955

Order No.	Model	A	B	D	E	F	G	H	L	L1	N	Force (kgf)	N.W.
65330-01	MHV-160LS	160	105	60	165	103	100	18	725	860	23	4400	80kg
65330-02	MHV-200LS	200	110	60	170	108	220	18	835	970	23	5500	100kg
65330-03	MHV-160L	160	105	60	165	103	100	18	1000	1130	23	4400	90kg
65330-04	MHV-200L	200	110	60	170	108	220	18	1100	1230	23	5500	130kg

Movable Jaw needs to be moved when clamping 0~400mm range for model 160L & 200L.

65340

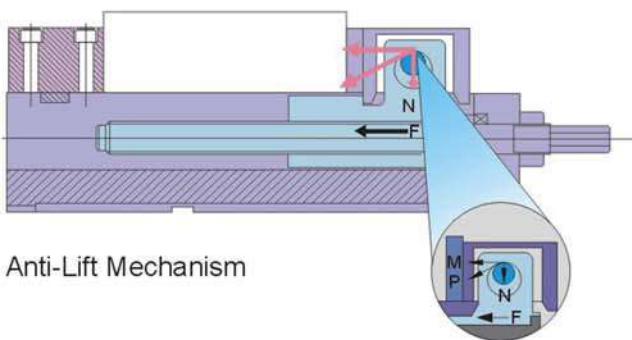
HVL

Precision Super Vise

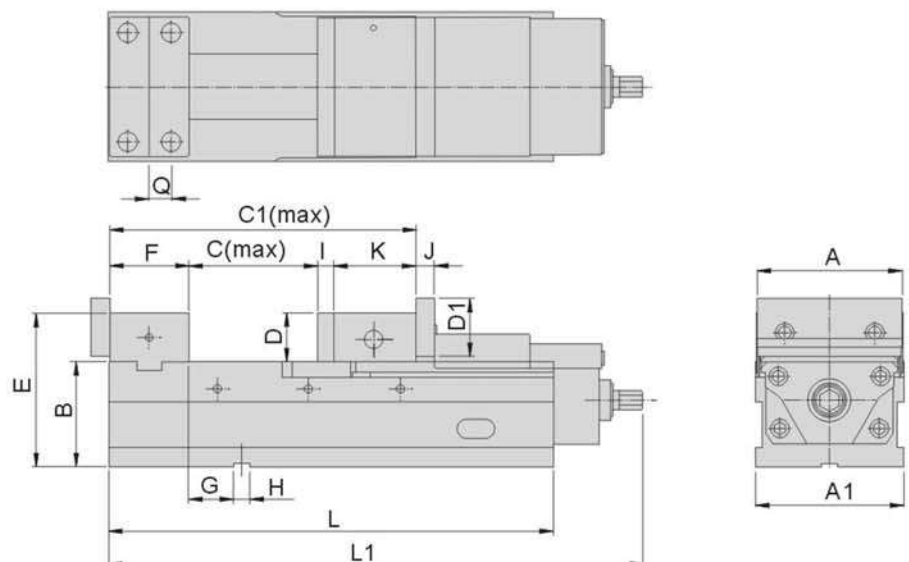


Features :

- ▶ Specially made for milling and cutting machining, adopting Anti-Lift mechanism.
- ▶ Particularly design for workpiece that needs high precision.
- ▶ Max. clamping force 2000kg/cm².
- ▶ Bed height deviation: within ± 0.01 mm.
- ▶ Distance from keyway to fixed jaw deviation: within ± 0.01 mm
- ▶ Horizontal / Vertical dual usage, side use is capable, accuracy within ± 0.01 mm.



Anti-Lift Mechanism



Unit:mm

Order No.	Model	A	A1	B	Clamping Range		D	D1	E	F	G	H	I	J	K	L	L1	Q	N.W.
					C	C1													
65340-40	HVL100	102	104	85	140	314.5	45	55	130	73	32	18	15	17	86.5	324	437	20	27kg
65340-50	HVL125	124.7	127	100	201	381.5	53	63	153	78	57	18	15	20	87.5	390	480	22.5	43kg
65340-60	HVL160	159.2	161	115	295	479	53	63	168	86	49	18	18	20	80	485	625	25	67kg

Milling Machine Accessories

65350

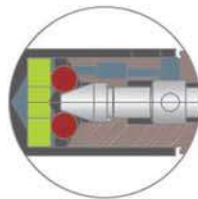
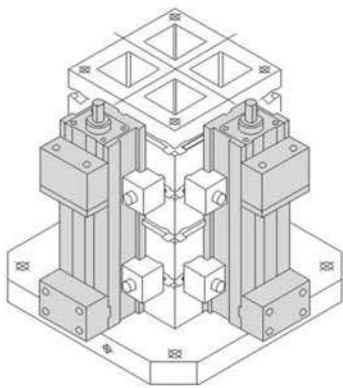
HVQ

Mechanical Power Machine Vise

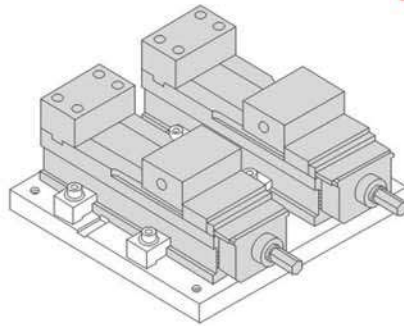


Features:

- ▶ Unique Out-Jaw design increase the clamping capacity.
- ▶ Anti-Lift mechanism to ensure the workpiece does not lift during processing.
- ▶ Mechanical booster provides a steady clamping force against shocks and vibrations during operation by using "Disc-spring" mounted inside.
- ▶ Improved dust and water resistance which increase durability.
- ▶ Bed height deviation: within ± 0.01 mm.
- ▶ Distance from keyway to fixed jaw deviation: within ± 0.01 mm
- ▶ Capable of vertical and lateral application and perform, accuracy within ± 0.01 mm.
- ▶ Made of Ductile Iron FCD60 JIS (80000psi).



Mechanical Booster



Jaw Opening:

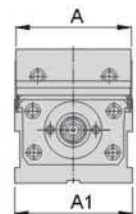
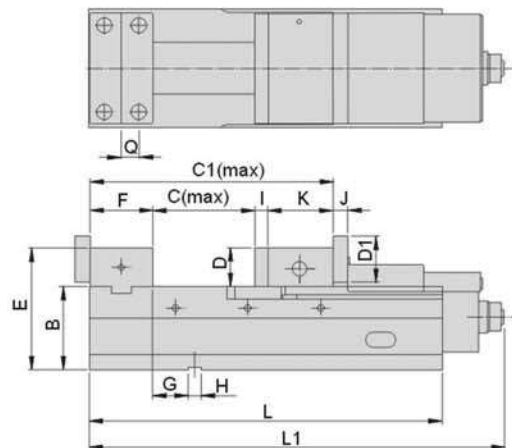
- HVQ100, max. 140mm
- HVQ125, max. 201mm
- HVQ160, max. 295mm
- HVQ200, max. 320mm

Extended Opening:

- HVQ160L, max. 330mm
- HVQ200L, max. 367.5mm

Clamping force is adjustable with graduation lines:

- HVQ100-4, max. 500kg/cm²
- HVQ125-5, max. 000kg/cm²
- HVQ160-5, max. 500kg/cm²
- HVQ200-6, max. 500kg/cm²



Order No.	Model	A	A1	B	Clamping Range		D	D1	E	F	G	H	I	J	K	L	L1	Q	N.W.
					C	C1													
65350-40	HVQ100	102	104	85	140	314.5	45	55	130	73	32	18	15	17	86.5	324	428	20	28.4kg
65350-50	HVQ125	124.7	127	100	201	381.5	53	63	153	78	57	18	15	20	87.5	390	495	22.5	46.0kg
65350-60	HVQ160	159.2	161	115	295	479	53	63	168	86	49	18	18	20	80	485	605	25	71.0kg
65350-60L	HVQ160L	159.2	161	115	330	514	53	63	168	86	67	18	18	20	80	515	635	25	76.0kg
65350-80	HVQ200	199.5	202	120	320	534	58	73	178	101	66	18	18	20	95	535	655	31	100kg
65350-80L	HVQ200L	200	202	120	367.5	581.5	58	73	178	101	84	18	18	20	95	585	713	31	108kg

Unit:mm

MILLING MACHINE ACCESSORIES

Milling Machine Accessories

65360

HPAC

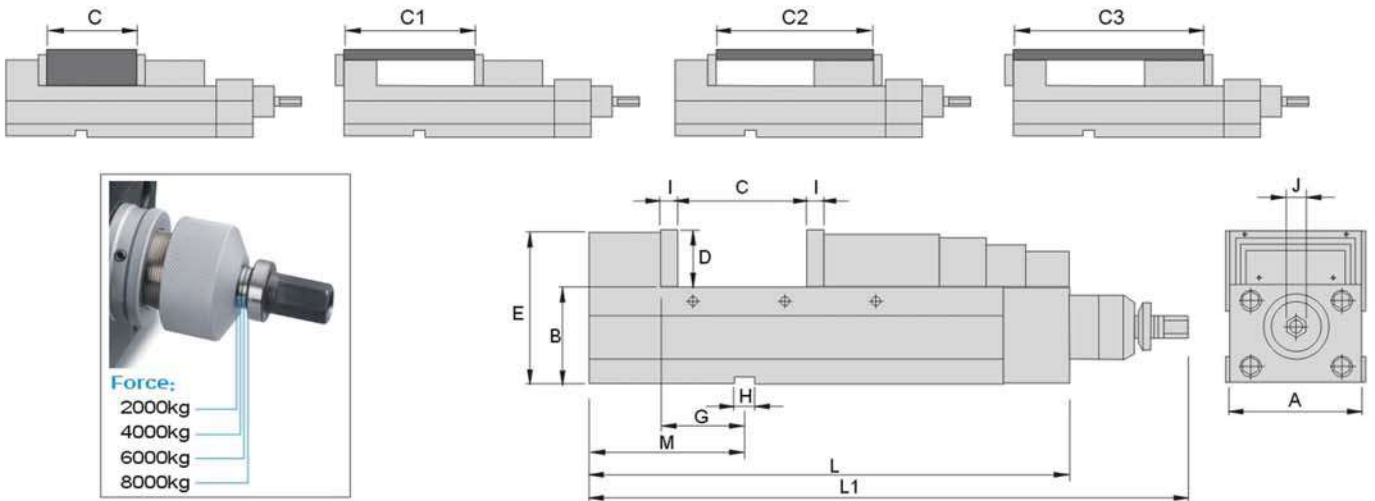
Multi-Power CNC Precision Fixed Angle Vise



Mechanical Booster makes repeat clamp accurately and max. clamping force up to 8000kgf

Features :

- ▶ Made of Ductile Iron FCD60 JIS (80000psi) with one-piece body structure, the distortion volume is less than 0.01mm when bearing pressure 4500kg.
- ▶ Slide ways are hardened to HRC50^o to enhance the wear-resistance and maintain same bed height each purchase.
- ▶ Angle-Lock design to ensure workpiece does not lift. Four datum design, the vise can be mounted both horizontally and vertically.
- ▶ Multi-Power System with built-in high grade bearing steel to double the clamping force. With the first half a turn, 2500kg force is delivered, then a second half turn will generate 4500kg force.
- ▶ Adjustable Stop Ring, simple and effective presetting the vise to present desire clamping force and it repeats accurately each time.



SPECIFICATIONS (Material:FCD 60,Ductile Iron,Hardness HRC50^o)

Unit:mm

Order No.	Model	A	B ±0.01	Clamping Range				D	E	G ±0.02
				C	C1	C2	C3			
65360-130	HPAC130	131	95	0-190	70-260	115-305	185-375	55	147	80
65360-160	HPAC160	161	105	0-250	85-325	140-375	220-460	58	160	80
65360-200	HPAC200	201	110	0-290	90-380	155-440	240-530	63	170	100

Order No.	Model	H	I	J	L	L1	M	N.W.
65360-130	HPAC130	18	15	19	475	583	150	44.4kg
65360-160	HPAC160	18	15	19	560	670	165	65kg
65360-200	HPAC200	18	18	19	635	743	197	95kg

65370 HPAQ Multi-Power CNC Precision Fixed Angle Vise



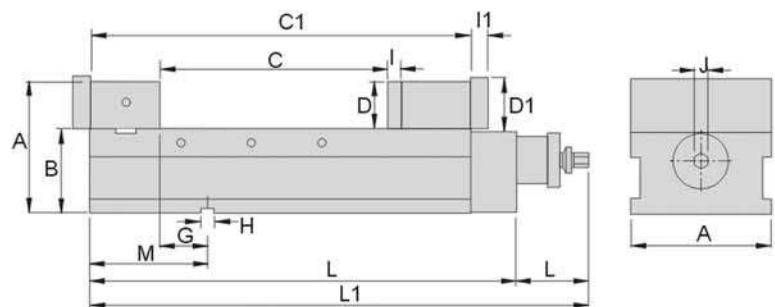
Mechanical Booster makes repeat clamp accurately and max. clamping force up to 8000kgf

The Multi-Power System built of high grade bearing steel provides consistent clamping pressure and eliminates all leakage and maintenance problems with hydraulic vises.



Features:

- ▶ Made of Ductile Iron FCD60 JIS (80000psi) with one-piece body structure, the distortion volume is less than 0.01mm when bearing pressure 4500kg.
- ▶ Fixed Jaw is made by high quality steel and hardened to HRC55°.
- ▶ Slide ways are hardened to HRC50° to enhance the wear-resistance and maintain same bed height each purchase.
- ▶ Angle-Lock design to ensure workpiece does not lift.
- ▶ Four datum design, the vise can be mounted both horizontally and vertically.
- ▶ Multi-Power System with built-in high grade bearing steel to double the clamping force.
- ▶ With the first half a turn, 2500kg force is delivered, then a second half turn will generate 4500kg force.
- ▶ Adjustable Stop Ring, simple and effective presetting the vise to present desire clamping force and it repeats accurately each time.



Unit:mm

Order No.	Model	A	B ±0.01	Clamping Range		D	D1	E	G ±0.02
				C	C1				
65370-160	HPAQ160	160	115	0-300	195-490	53	63	168	57
65370-200	HPAQ200	200	120	0-320	220-540	66	75	187	66
65370-250	HPAQ250	250	120	0-350	220-580	66	75	187	66

Order No.	Model	H	I	I1	J	L	L1	M	Max.Force	N.W.
65370-160	HPAQ160	18	15	21	19	560	677	145	8000kg	73kg
65370-200	HPAQ200	18	18	25	19	637	754	168	8000kg	113kg
65370-250	HPAQ250	18	18	25	19	646	763	168	8000kg	156kg

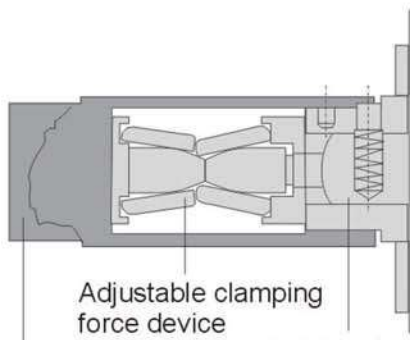
MILLING MACHINE ACCESSORIES

65380 JQV Ultra-low Height Mechanical Power Vise



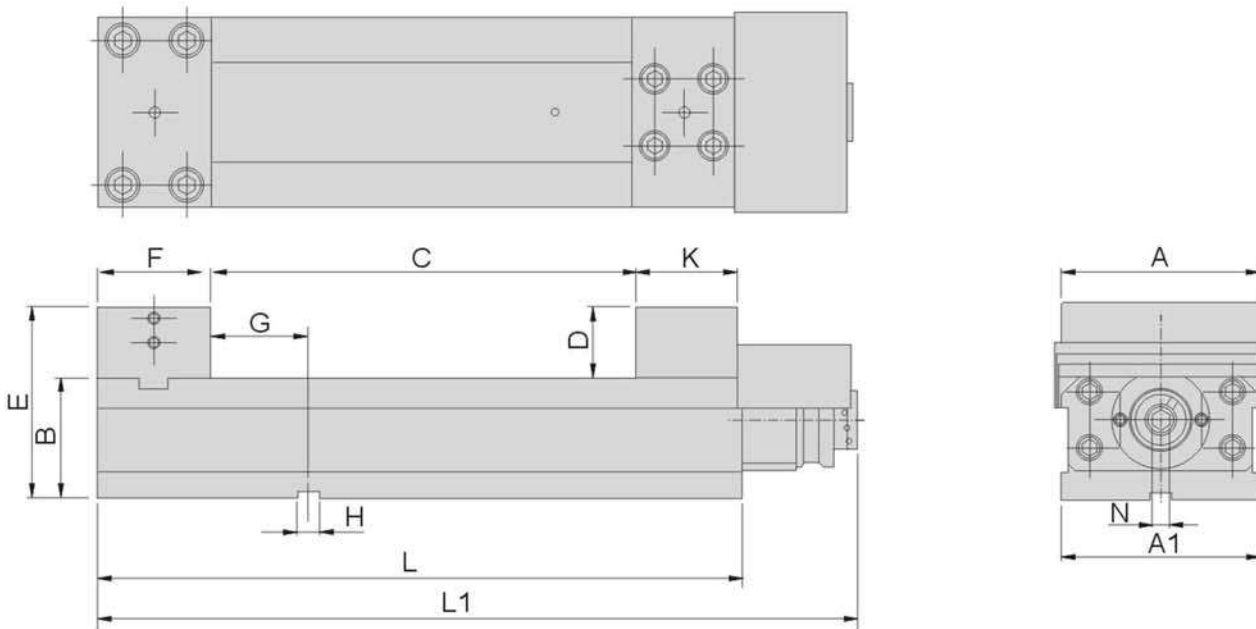
Features :

- ▶ Low bed height and large opening design. Made of Ductile Iron FCD60 JIS (80000psi) with one-piece body structure, the distortion volume is minimum.
- ▶ Slide way is high frequency inducted hardened HS65°.
- ▶ Special Anti-Lift mechanism, prevent any lifting while clamping.
- ▶ Jaw plate is made of S50C and hardened to HRC50° to enhance the wear-resistance and maintain same bed height each purchase.
- ▶ Angle-Lock design to ensure workpiece does not lift.
- ▶ The vise can be mounted both horizontally and vertically.
- ▶ Dust cover is provided for protection.



Clamping Collar Adjustable clamping force device Driving device

MILLING MACHINE ACCESSORIES



Unit:mm

Order No.	Model	A	A1	B	C	D	E	F	G	H	K	L	L1	N	Force	N.W.
65380-01	JQV160S	159.5	161	105	235	60	165	86	59	18	86	416	515	14	5000kg	55kg
65380-02	JQV160M	159.5	161		275		165	86	59	18	86	456	555			57kg
65380-03	JQV160L	159.5	161	100	305		160	86	59	18	86	486	585			60kg

Milling Machine Accessories

65390

TLD

Precision Super Vise

Anti-Lift Mechanism

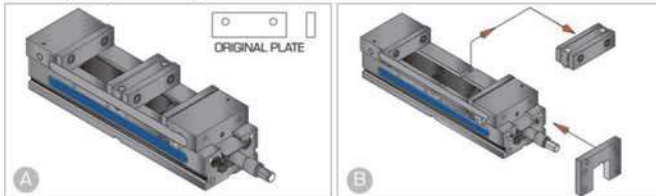
Double Clamp

Auto-return Mechanism



Clamping Force Equalisation

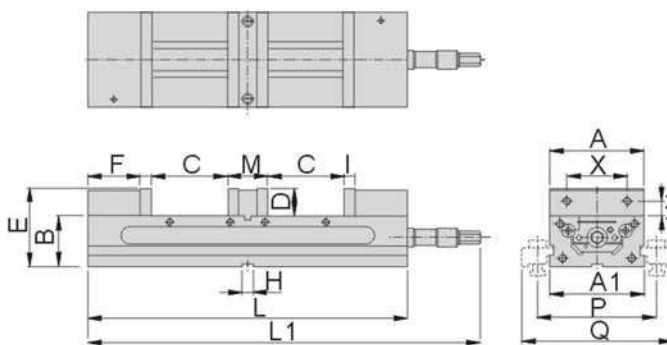
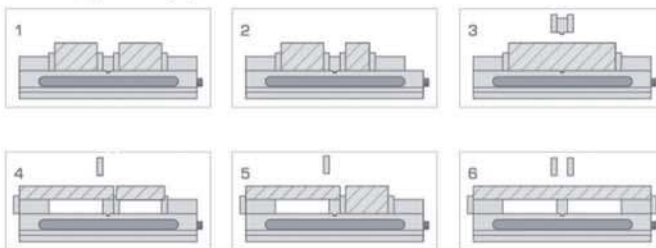
Clamping Change



Original clamp can hold 0-125mm & 0-90mm workpiece.

Remove the middle jaw and lock the plate to fixed one movable jaw, then the other movable jaw can hold workpiece 125-135mm.

Four types applications



Features:

- ▶ Clamping force equalisation: same force to two workpiece in different size.
- ▶ Anti-lift mechanism: ensure the workpiece does not lift during operation.
- ▶ Double clamp makes different size of workpieces can be clamped at the same time.
- ▶ Made of Ductile Iron FCD60 JIS (80,000psi), high-frequency flame hardened Hs65°.
- ▶ Jaw plate is made of S50C and hardened to HRC45° to enhance the wear-resistance.
- ▶ Repeat accuracy to $V1 \pm 0.015\text{mm}$

Unit:mm

Order No.	Model	A	A1	B	C	D	E	F	H	I	L	L1	M	P	Q	W	X	N.W.
65390-40	TLD40	102	104	63.5	0-90	38	101	69	18	15	405	459	55	143	195	17.5	63.5	20kg
65390-60	TLD60	152	154	82.55	0-125	44.5	127	86.5	18	18	520	536	66	193	245	23.8	98.4	52kg

LY1212

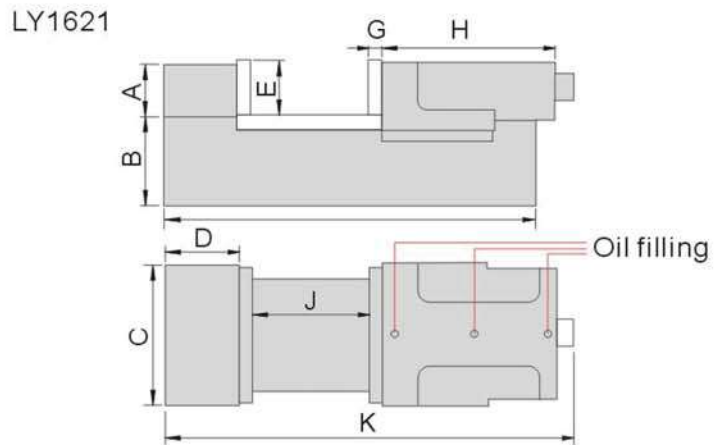
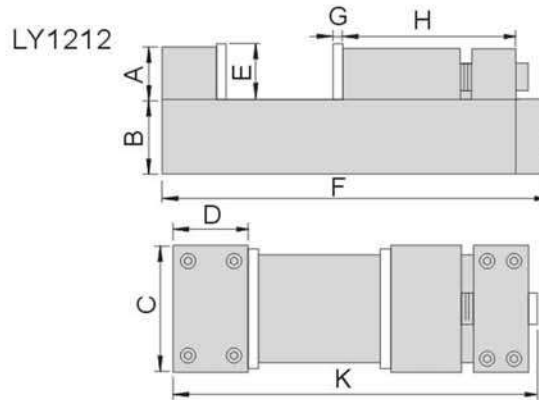
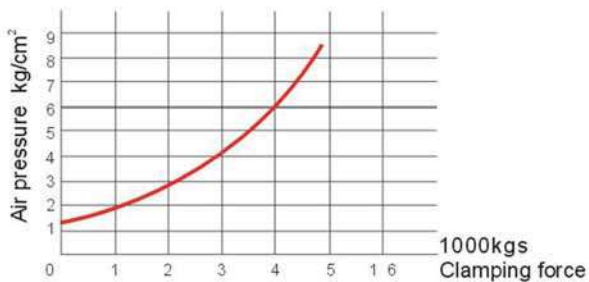


LY1621



Features:

- ▶ Special 5 times booster with lever, only take 0.5 second to clamp off.
- ▶ Design with check valve design avoiding air pressure lost increasing safety.
- ▶ Flat surface no slot between slide guide rail preventing chip and burr go inside.
- ▶ Made of quality FCD-65 Ductile Iron body with hardened HRC50° and ground precisely with durability.


 Air pressure 2~7kg/cm² Clamping force 400~4000kg


Unit:mm

Order No.	Model	A	B	C	D	E	F	G	H	J	K	Clamping force(kg)	Safety range	N.W.
65410-01	LY1212	50	105	120	60	53	453	15	190	127	424	200~3000	5mm	35kg
65410-02	LY1621	60	105	160	85	60	480	15	335	210	685	400~4000	5mm	55kg